

46. krídlo KUCHYŇA

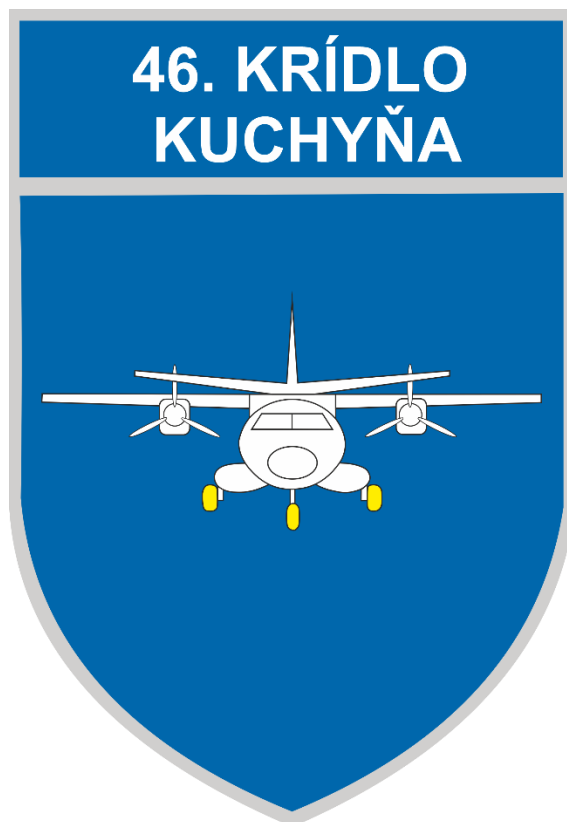
900 52

19 AUG 24

Kuchyňa AFB IN-FLIGHT GUIDE RWY 01/19

Version 1

Effective 19 AUG 24



ADMIN

1.	ARP coordinates RWY 01/19	48°24'07''N 017°07'06''E on the axis of THR RWY 01/19
2.	Magnetic variation / Annual change	5°1,5 E (2023) / ±0,8'E
3.	Elevation	689 ft
4.	Air Traffic Services	OAT H24
5.	Fueling	H24
6.	Fuel and oil types	Jet A1, F-34 AeroShell TO-3 SP, AeroShell-100, AeroShell -98, MJO-II
7.	Fueling facilities and capacity	Tank trucks: JET A1 1 x 16 000 l
8.	Technical Gases	Oxygen, Nitrogen
9.	AD category for fire fighters	CAT 5
10.	De-icing facilities	ELEPHANT My
11.	MET briefing office (for English call TWR)	H24, tel: +421 960 390 803
12.	FPL – AFTN Address	LZMICYWYA LZMICYWYX * All FPL have to be sent to AFTN addresses LZMICYWYA (Malacky TWR) and LZIBZPZX (CARO Bratislava)
13.	PPR REQ	Prior Permission Required through diplomatic channels for foreign military aircraft

1. INDEX

No.	Name	Valid from	Page Nr.	RMK
0	Cover	11.07.2024	1	
1	Index	01.07.2021	2-3	
2	Phone Numbers	11.07.2024	4	
3	ATC Frequencies / Navigational Aids/LGT system	01.07.2021	4-5	
4	RWY / TWY / APRON information	01.07.2021	5-6	
5	ATC Surveillance Minimum Altitude Chart (ASMAC)	13.06.2024	7	
6	Aerodrome Chart LZMC	22.04.2021	8	
7	APRON 1, 2, 3, 4	22.04.2021	9	

8	HYDRAZINE, HOT BRAKES, HUNG GUN, ARMING-DEARMING AREAS – LZMC NORTH	19.08.2024	10	
9	HYDRAZINE, HOT BRAKES, HUNG GUN, ARMING-DEARMING AREAS – LZMC SOUTH	19.08.2024	11	
10	SID RWY 01 – CAT A/B/C/D	13.06.2024	12	
11	SID RWY 19 – CAT A/B/C/D	11.07.2024	13	
12	SID RWY 19 – CAT E	11.07.2024	14	
13	STAR RWY 19 – CAT A/B/C/D/E	11.07.2024	15	
14	NDB RWY 19	13.06.2024	16	
15	ILS CAT I or LOC RWY 19 – CAT A/B/C/D	11.07.2024	17	
16	ILS CAT I or LOC RWY 19 – CAT E	11.07.2024	18	
17	PAR RWY 19 – CAT A/B/C/D	11.07.2024	19	
18	Visual Approach Chart LZMC	13.06.2024	20	
19	Formation Breakaway	11.07.2024	21	
20	Formation Join - up	11.07.2024	22	
21	RWY 19 VFR Recovery	19.08.2024	23	
22	RWY 01 VFR Recovery	19.08.2024	24	
23	RWY 19 VFR Patterns (OVERHEAD)	19.08.2024	25	
24	RWY 01 VFR Patterns (OVERHEAD)	19.08.2024	26	
25	LZR314 MCTR Malacky	01.07.2021	27	
26	LZR1, 2, LZTRA 3 MTMA	01.07.2021	28-30	
27	Emergency	01.07.2021	31-33	
28	Alternate AD	18.04.2024	34	

2. PHONE NUMBERS

Wing Commander	+421 960 390 100	peter.vyrostek@mil.sk
Squadron Commander	+421 960 390 300	radovan.belas@mil.sk
Maintenance Chief	+421 960 930 103	tibor.feher@mil.sk
TWR	+421 960 390 450 +421 960 390 451 +421 960 390 800	lzmc.tower@mil.sk
APP	+421 960 390 460	lzmc.app@mil.sk
MET briefing office	+421 960 390 803	lzmc.meteo@mil.sk
Emergency Services civilian (Police, Fire, Ambulance)	112	NIL
Address	46. krídlo KUCHYŇA 900 52 Kuchyňa	NIL

3. ATC FREQUENCIES / NAVIGATION AIDS

Service designation	Call sign	Frequency	Operation Hours	RMK
RC APP	MALACKY RADAR	120,750 MHz 259,625 MHz ^{2.)} 129,575 MHz ^{2.)} 121,500 MHz ^{1.)}	OAT – H24	
PC TWR	MALACKY TOWER	129,575 MHz 120,750 MHz ^{2.)} 121,500 MHz ^{1.)}	OAT – H24	Contact TWR for start-up and clearance
RC PAR	MALACKY PRECISION	127,150 MHz	OAT – H24	
RANGE BRAVO	ERABURA	142,350 MHz 315,950 MHz ^{2.)}	OR	During shooting range „B,, OPR
M/ACC	BRATISLAVA CONTROL	125,000 124,000 ^{2.)}	OAT – H24	FIR Bratislava OAT

1.) emergency frequency

2.) alternate frequency

TYPE	ID	FREQ	OPR HOURS	COORDINATES	RMK
LLZ 19 ILS CAT I	RP	111,55 MHz	H24	48°23'07.44'' N 17°06'37.69'' E	RNG 25 NM (±10 DEG/2 000 ft) RNG 17 NM (±35 DEG/2 000 ft).
GP ILS 19		332,75 MHz	H24	48°24'37.30'' N 17°07'13.33'' E	Glide path angle is 3,00 DEG. ILS reference datum height is 16,8 m.
DME	RP	CH 52 Y	H24	48°24'37.30'' N 17°07'13.33'' E	
OM	RP	477 kHz	U/S	48°28'28.20'' N 17°09'09.50'' E	
MM	R	231 kHz	U/S	48°25'16.11'' N 17°07'38.60'' E	
TACAN	MLC	107 X	H24	48°21'51.61'' N 17°11'52.86'' E	ELEV 2357 ft TACAN is dislocated from AIRPORT

4. RWY / TWY / APRON INFORMATION

RWY	TRUE and MAG bearing	Dimensions of RWY (m/ft)	Strength (PCN) and surface of RWY	THR Coordinates	THR Elevation (m/ft)
01	017,48°GEO 012,63°MAG	2500m x 60m 8202ft x 197ft	PCN 38/R/B/X/U concrete	48°23'28.6'' N 17°06'47.76'' E	THR 200,86 m THR 659 ft
19	197,49°GEO 192,63°MAG	2500m x 60m 8202ft x 197ft	PCN 38/R/B/X/U concrete	48°24'45.86'' N 17°07'24.27'' E	THR 209,09 m THR 686 ft

RWY	TORA (m/ft)	TODA (m/ft)	ASDA (m/ft)	LDA (m/ft)	Arresting system
01	2500m/8202ft	2720m/8923ft	2500m/8202ft	2500m/8202ft	INOP
19	2500m/8202ft	3050m/10006ft	2500m/8202ft	2500m/8202ft	INOP

TWY	Width	Surface	Strength	RMK
A	15 m / 49 ft	concrete	PCN 33/R/B/X/U	NIL
B,C,D,E	11 m / 36 ft	concrete	PCN 33/R/B/X/U	NIL
F	12 m / 39 ft	asphalt	PCN 25/R/B/X/U	CLSD
G	15m / 49 ft	concrete	PCN 38/R/A/W/T	NIL

APN	Surface	Strength	RMK
Apron 1	asphalt	PCN 19/R/B/X/U	NIL
Apron 2	concrete	PCN 38/R/B/X/U	NIL
Apron 3	asphalt	PCN 33/R/B/X/U	NIL
Apron 4	concrete	PCN 33/R/B/X/U	NIL

5. ATC Surveillance Minimum Altitude Chart (ASMAC)

MIL AIP SLOVENSKÁ REPUBLIKA
MIL AIP SLOVAK REPUBLIC

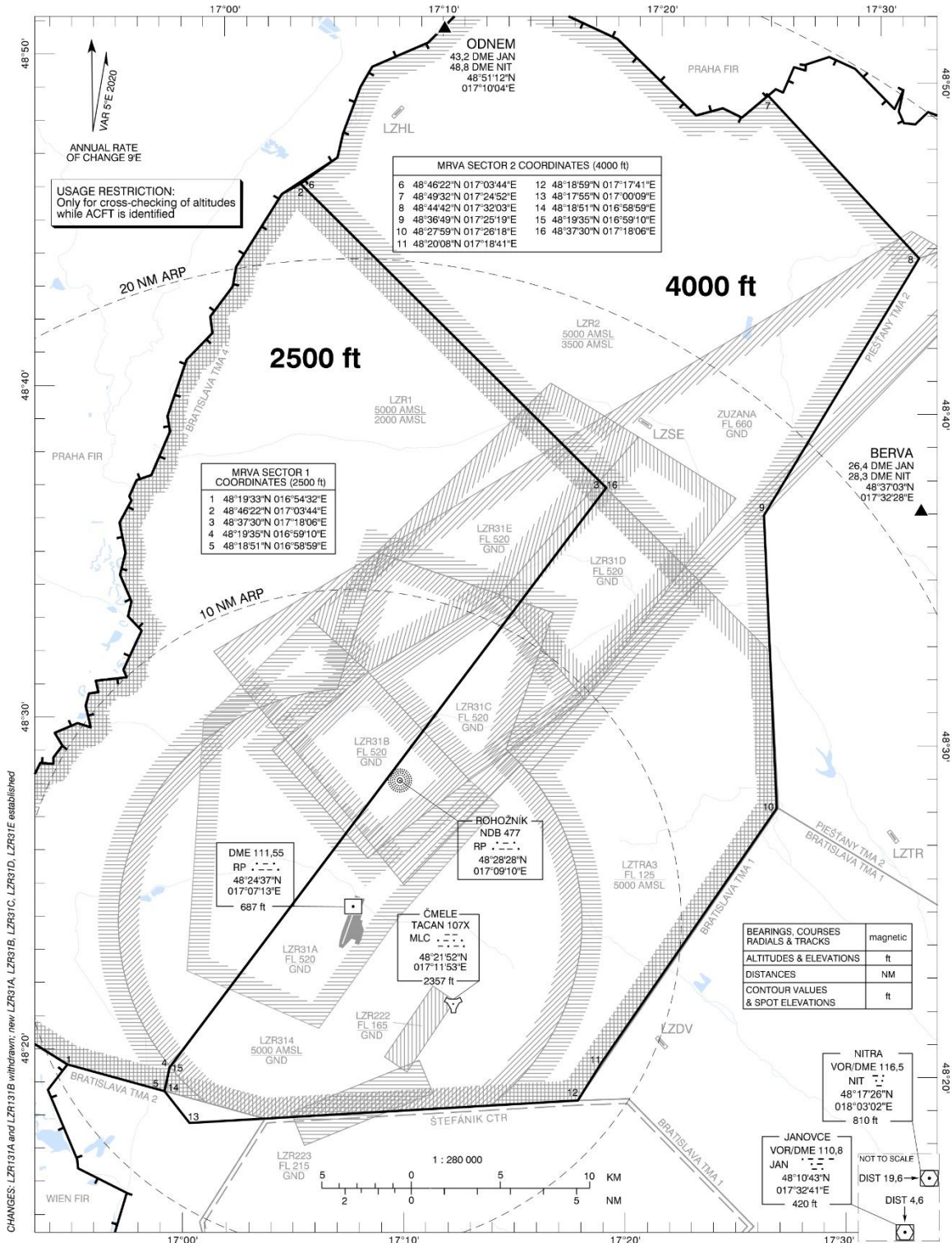
AD 2-LZMC-9-1
13 JUN 24

ATC SURVEILLANCE MINIMUM
ALTITUDE CHART - ICAO

TRANSITION ALTITUDE
10 000 ft

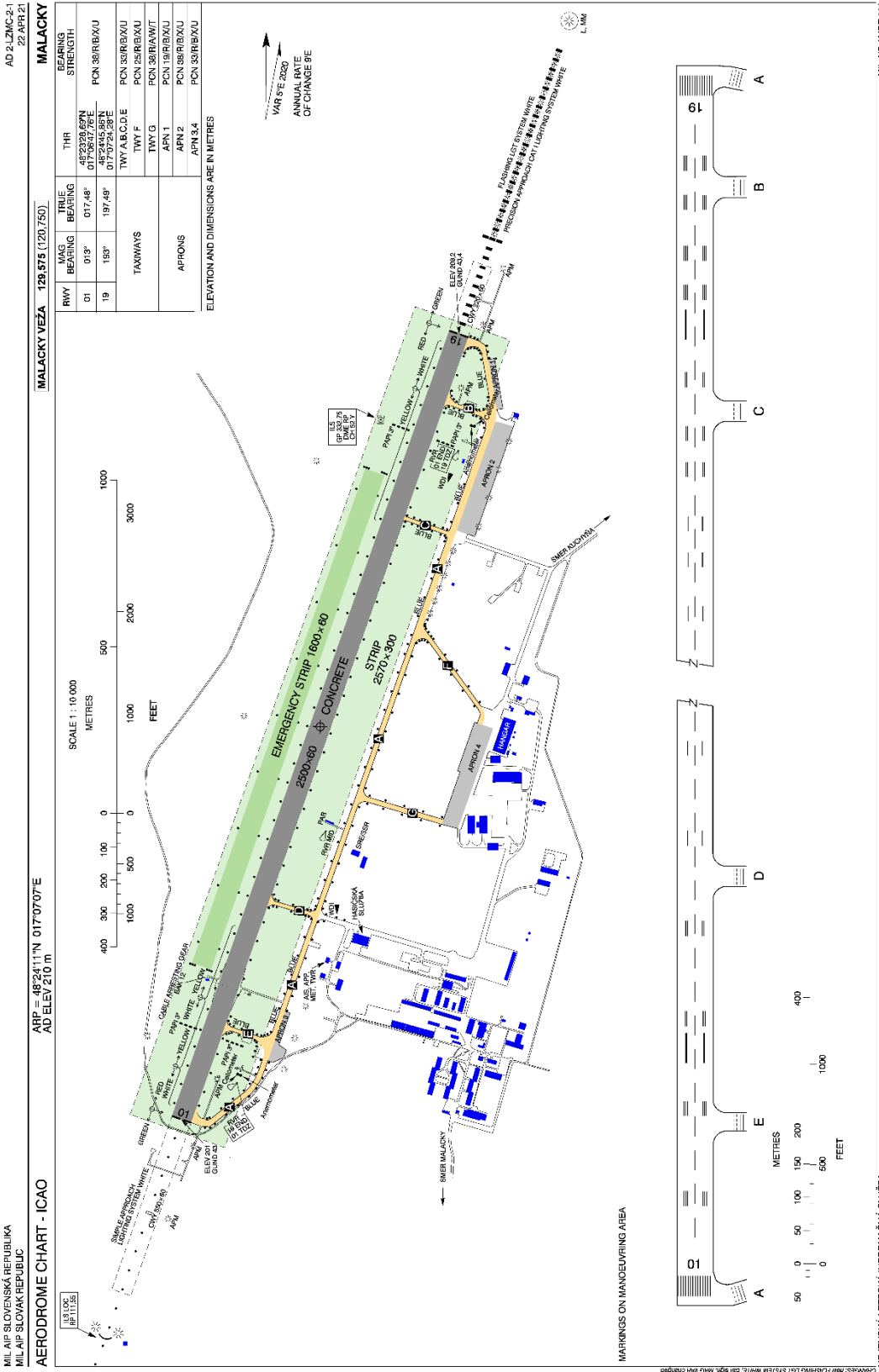
MALACKY RADAR 120,750 (259,625)
MALACKY TOWER 129,575 (129,575)

AD ELEV 210 m MALACKY (LZMC)



CHANGES: LZR31A and LZR31B withdrawn; new LZR31A, LZR31B, LZR31C, LZR31D, LZR31E established

6. AERODROME CHART LZMC



7. APRON 1, 2, 3, 4

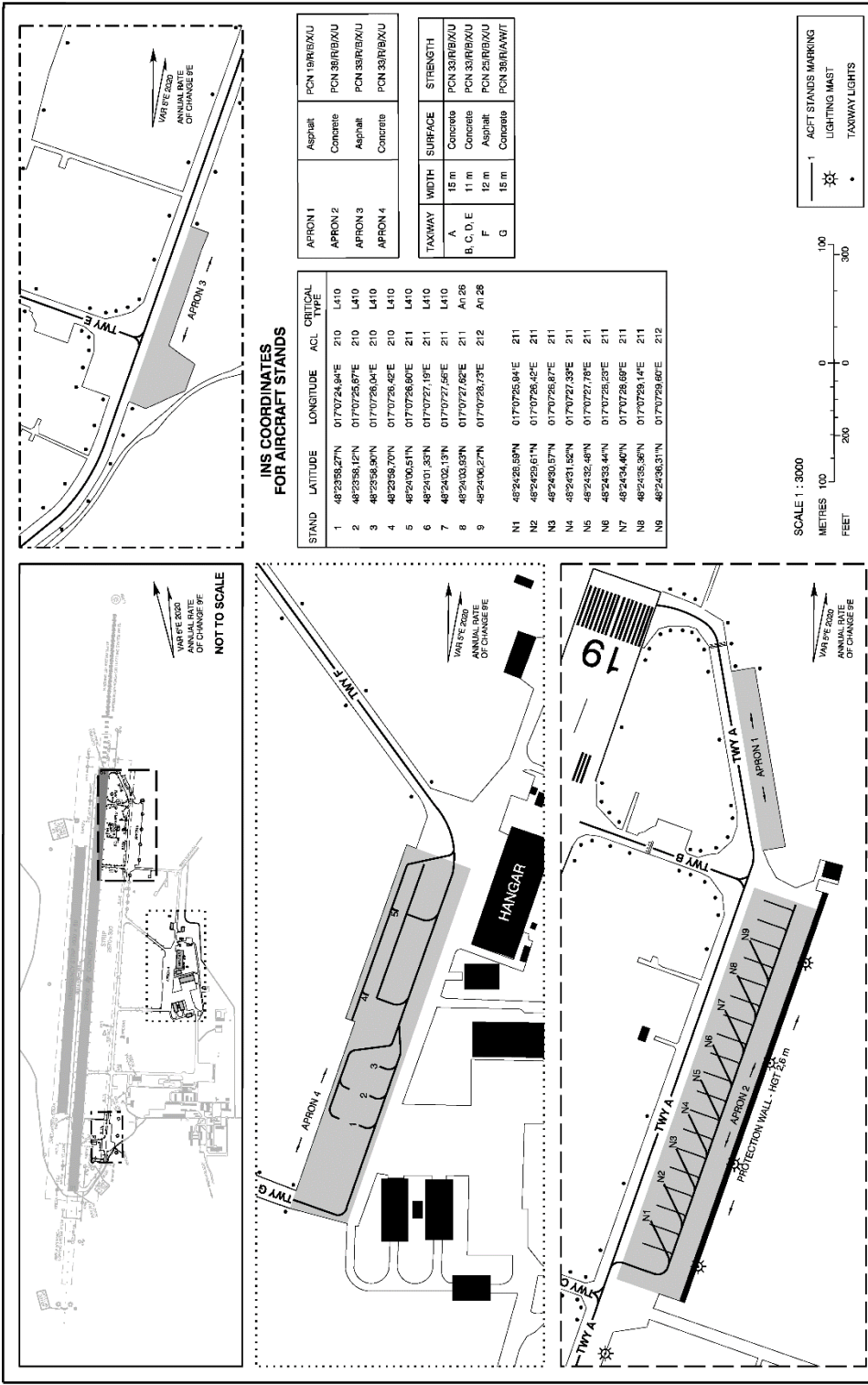
AD 2-LZMC-2-3
22 APR 21
LZMC
MALACKY

MALACKY VEZA 129,575 (120,750)

APRON 1 ELEV 211m
APRON 2 ELEV 211m
APRON 3 ELEV 203m
APRON 4 ELEV 211m

AIRCRAFT PARKING/DOCKING CHART - ICAO

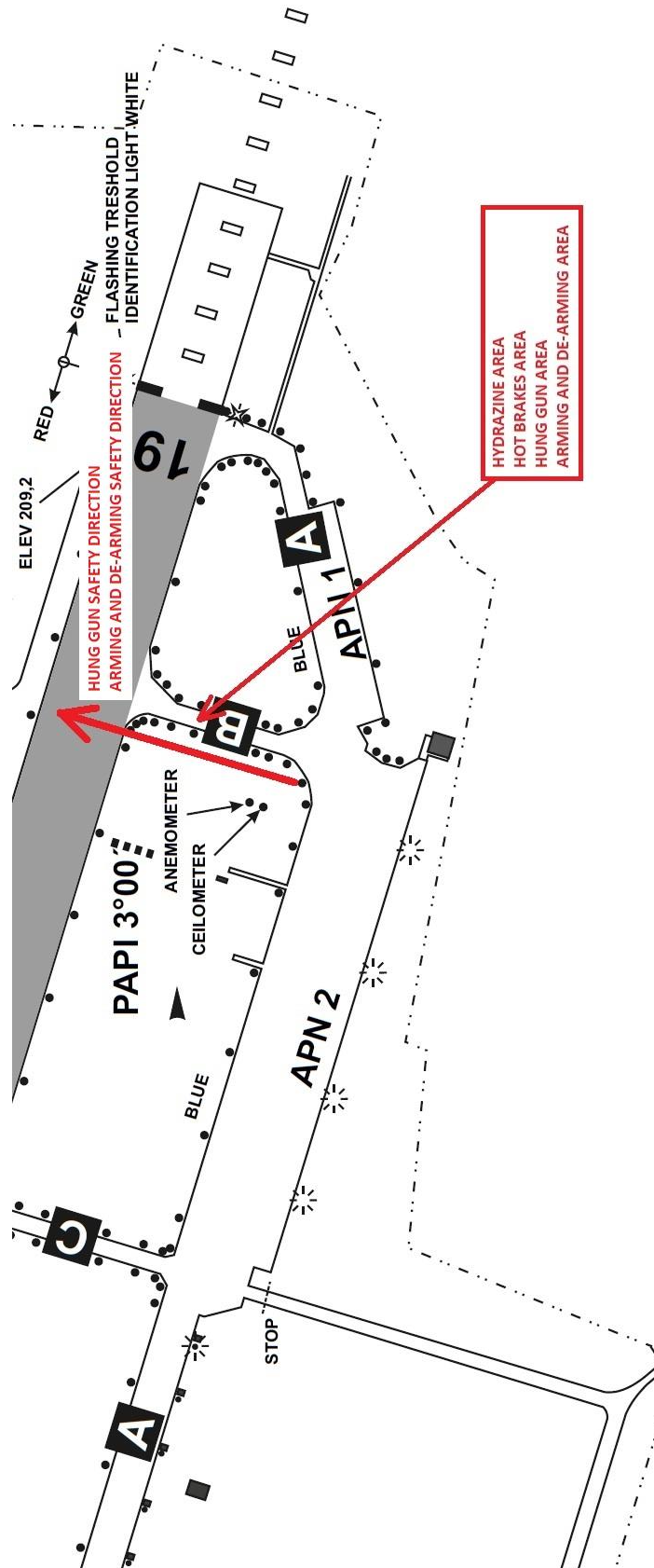
MIL AIR SLOVENSKÁ REPUBLIKA
MIL AIR SLOVAK REPUBLIC



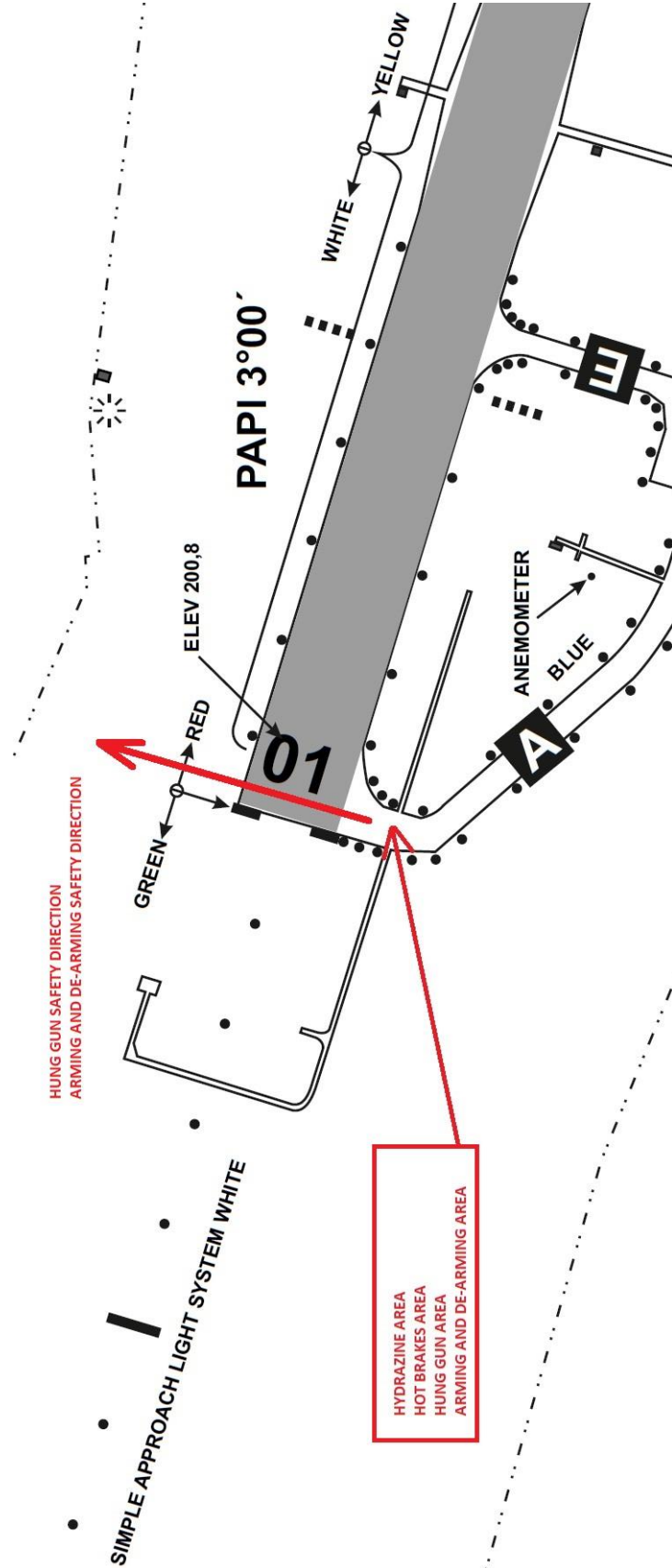
MIL AIR AMDT 032

VOJENSKÁ LETECKÁ INFORMAČNÁ SLUŽBA
MILITARY AERONAUTICAL INFORMATION SERVICE

8. HYDRAZINE, HOT BRAKES, HUNG GUN, ARMING-DEARMING AREAS – LZMC NORTH



9. HYDRAZINE, HOT BRAKES, HUNG GUN, ARMING-DEARMING AREAS – LZMC SOUTH



10. STANDARD INSTRUMENT DEPARTURE RWY 01 – CAT A/B/C/D

MIL AIP SLOVENSKÁ REPUBLIKA
MIL AIP SLOVAK REPUBLIC

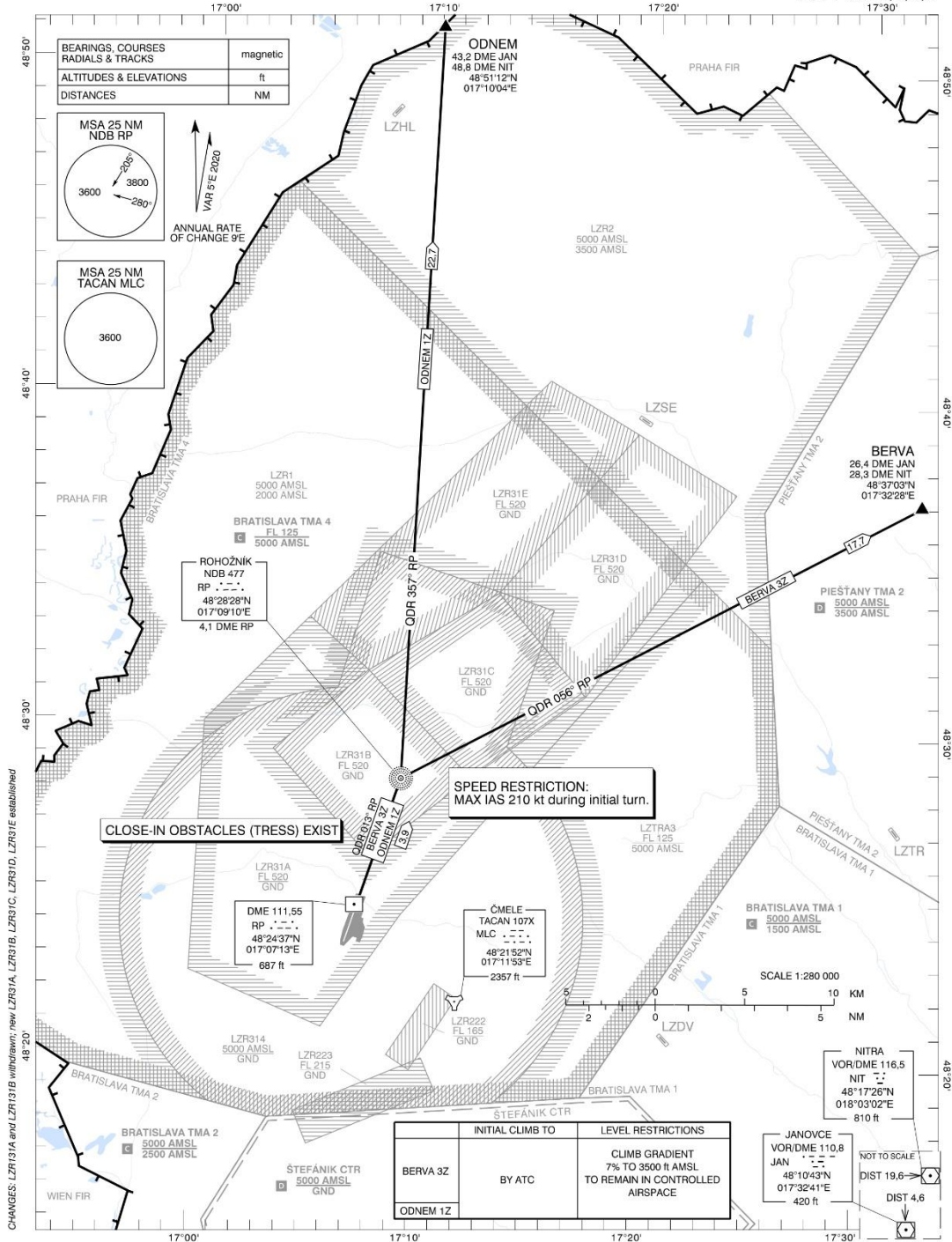
AD 2-LZMC-5-1
13 JUN 24

STANDARD DEPARTURE CHART -
INSTRUMENT (SID) - ICAO

TRANSITION ALTITUDE
10 000 ft

MALACKY RADAR 120,750 (259,625)
MALACKY TOWER 129,575 (120,750)

MALACKY (LZMC)
SID RWY 01
ACFT CAT A/B/C/D



11. STANDARD INSTRUMENT DEPARTURE RWY 19 – CAT A/B/C/D

MIL AIP SLOVENSKÁ REPUBLIKA
MIL AIP SLOVAK REPUBLIC

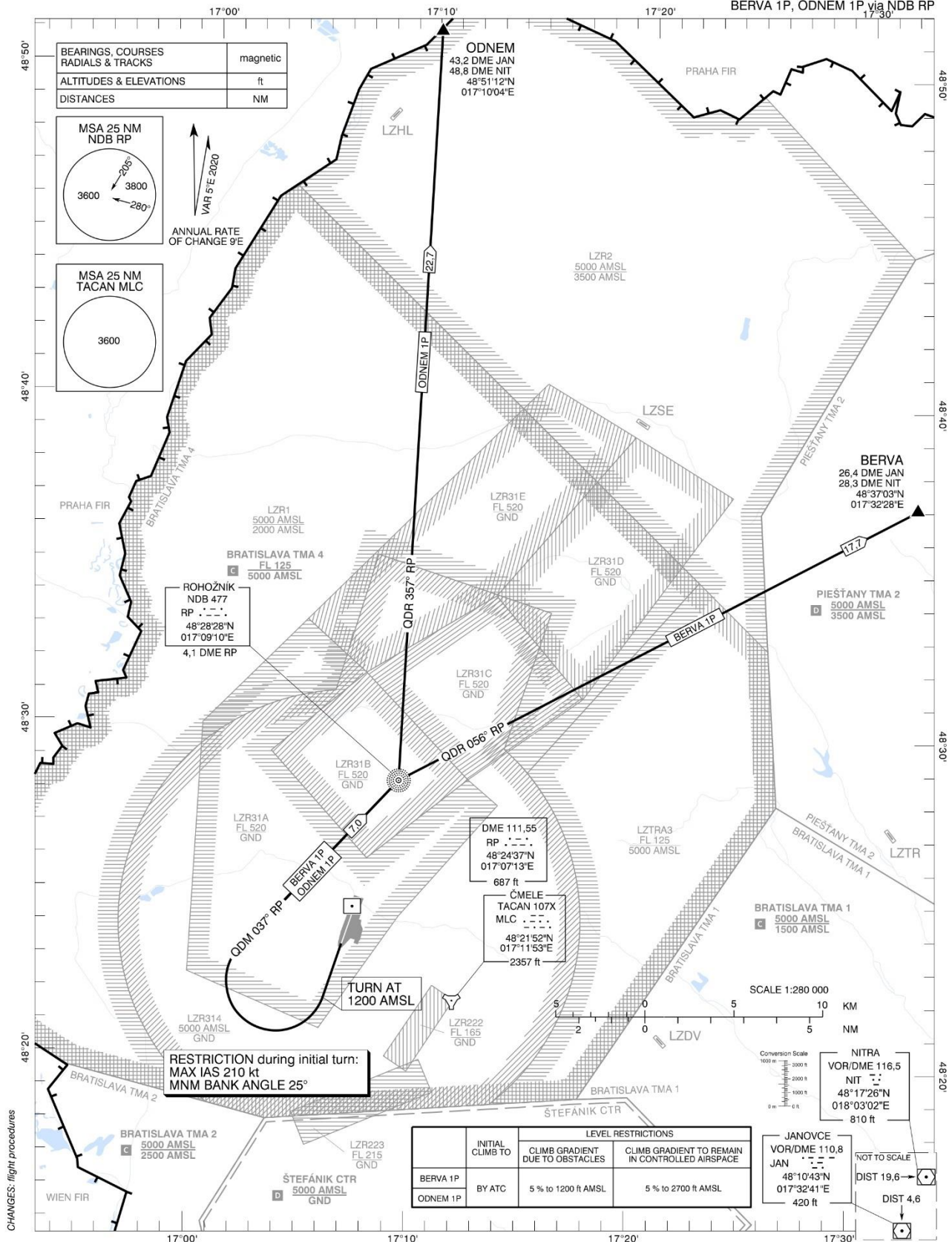
AD 2-LZMC-5-3
11 JUL 24

STANDARD DEPARTURE CHART -
INSTRUMENT (SID) - ICAO

TRANSITION ALTITUDE
10 000 ft

MALACKY RADAR 120,750 (259,625)
MALACKY TOWER 129,575 (120,750)

MALACKY (LZMC)
SID RWY 19
ACFT CAT A/B/C/D
BERVA 1P, ODNEM 1P via NDB RP



12. STANDARD INSTRUMENT DEPARTURE RWY 19 – CAT E

MIL AIP SLOVENSKÁ REPUBLIKA
MIL AIP SLOVAK REPUBLIC

AD 2-LZMC-5-5
11 JUL 24

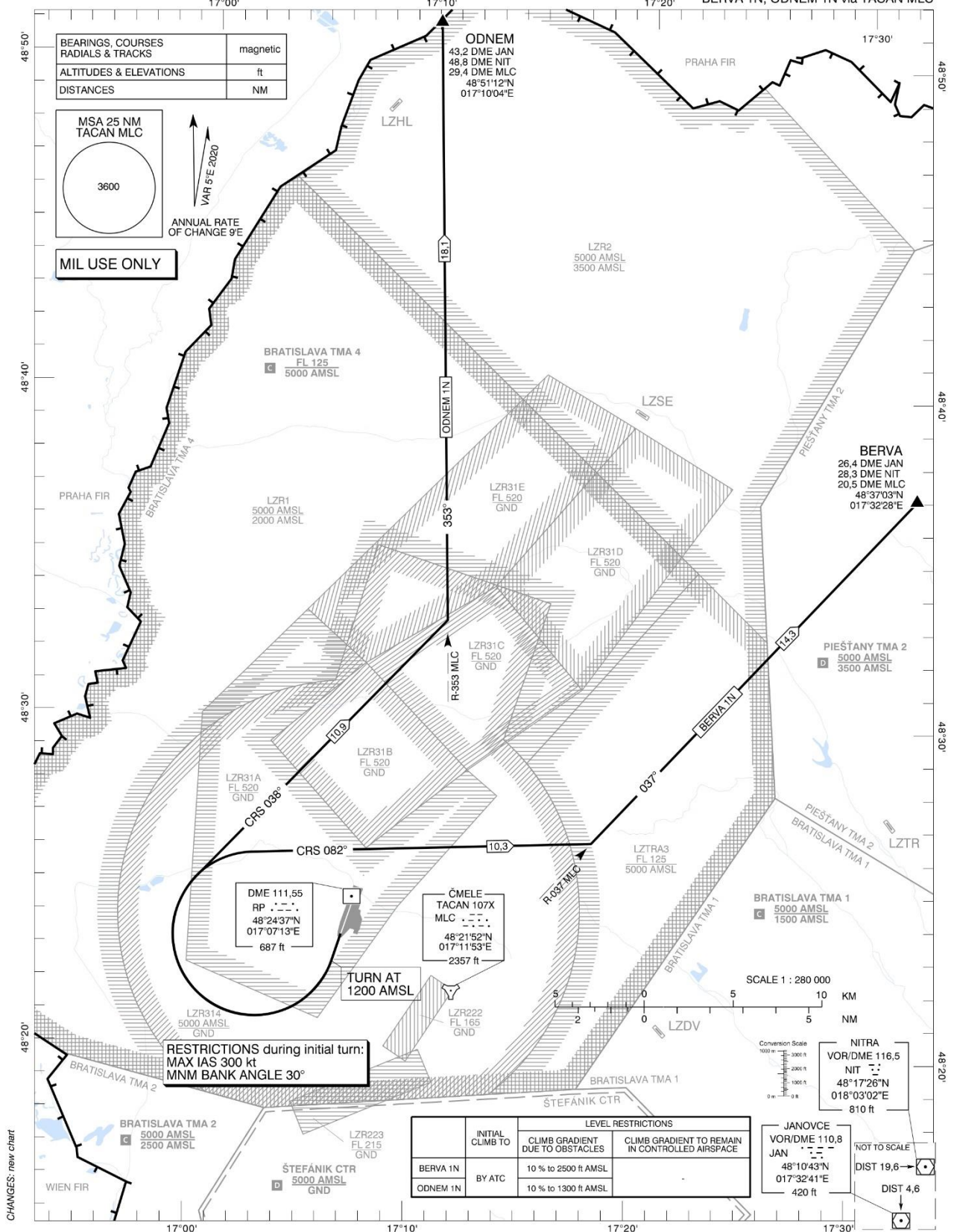
STANDARD DEPARTURE CHART -
INSTRUMENT (SID)

TRANSITION ALTITUDE
10 000 ft

MALACKY RADAR 120,750 (259,625)
MALACKY TOWER 129,575 (120,750)

MALACKY (LZMC)
SID RWY 19
HPMA/ACFT CAT E

BERVA 1N, ODNEM 1N via TACAN MLC



13. STANDARD INSTRUMENT ARRIVAL RWY 19

MIL AIP SLOVENSKÁ REPUBLIKA
MIL AIP SLOVAK REPUBLIC

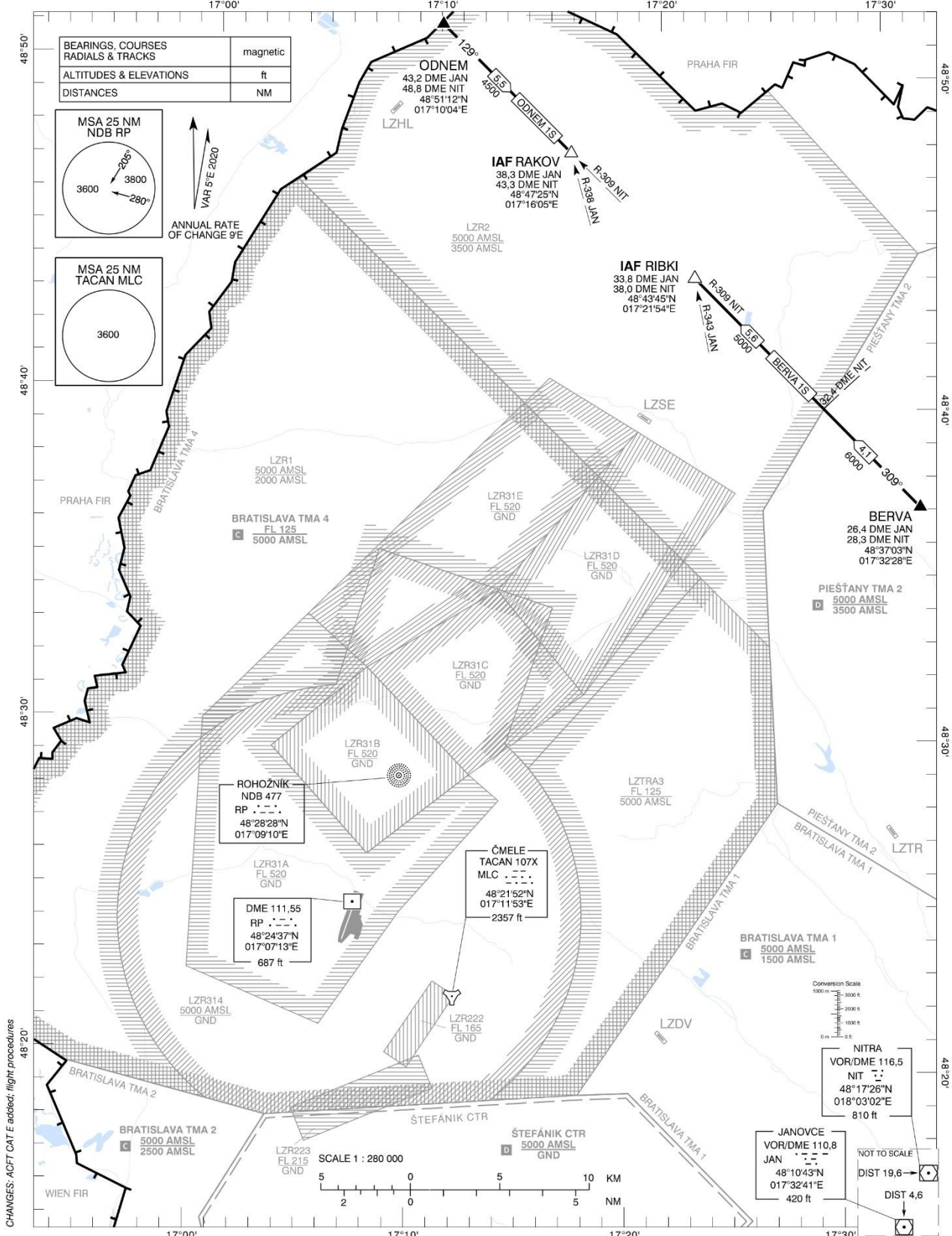
AD 2-LZMC-6-1
11 JUL 24

STANDARD ARRIVAL CHART -
INSTRUMENT (STAR) - ICAO

TRANSITION ALTITUDE
10 000 ft

MALACKY RADAR 120,750 (259,625)
MALACKY TOWER 129,575 (120,750)

MALACKY (LZMC)
STAR RWY 19
ACFT CAT A/B/C/D/E



CHANGES: ACFT CAT E add/ect; flight procedures

14. NDB RWY 19

MIL AIP SLOVENSKÁ REPUBLIKA
MIL AIP SLOVAK REPUBLIC

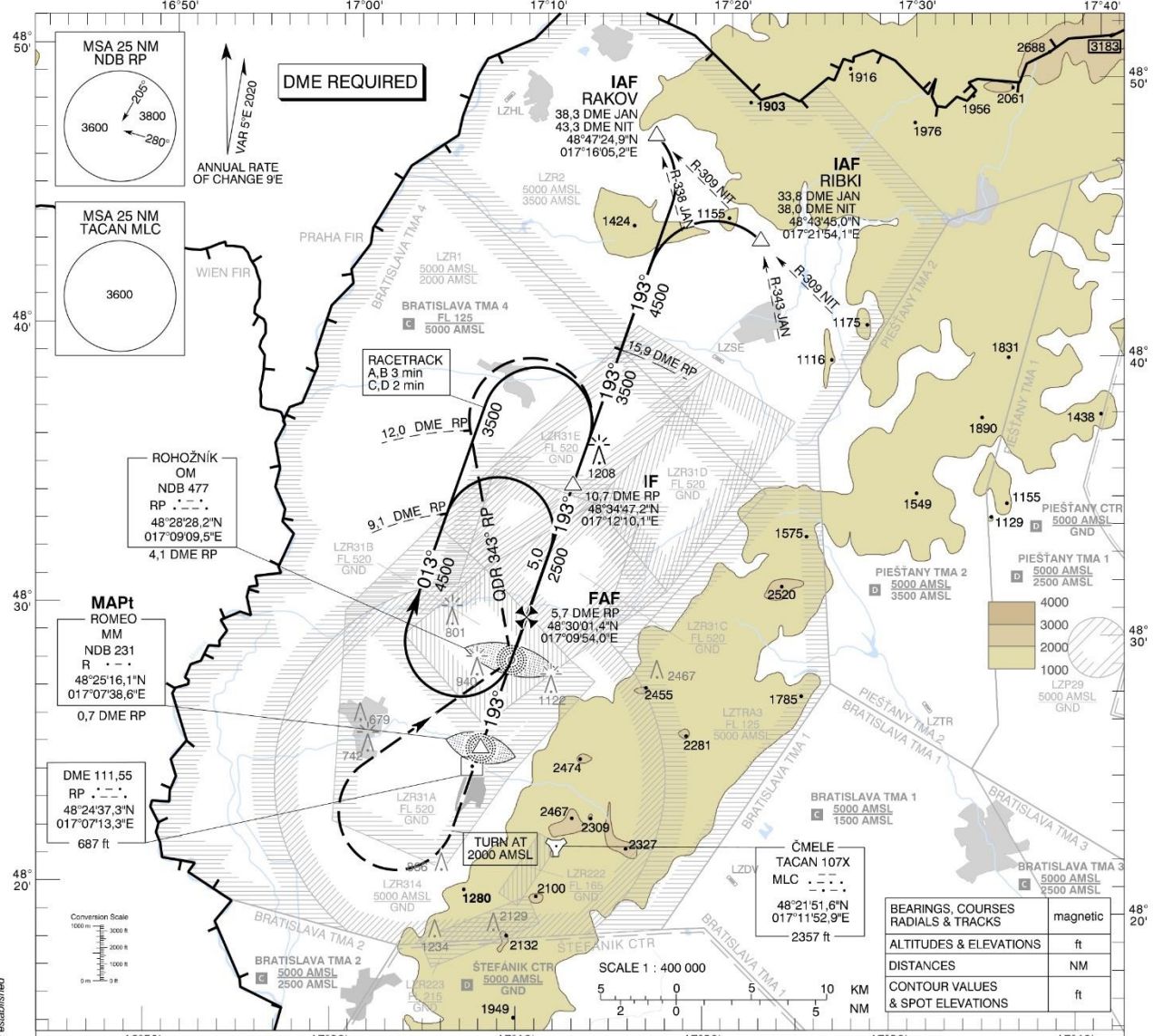
AD 2-LZMC-7-1
13 JUN 24

INSTRUMENT
APPROACH
CHART - ICAO

TRANSITION ALTITUDE
10 000 ft

MALACKY RADAR 120,750 (259,625)
MALACKY TOWER 129,575 (120,750)

MALACKY (LZMC)
NDB RWY 19
ACFT CAT A/B/C/D

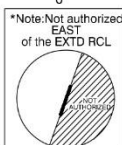


MISSED APPROACH

Climb STRAIGHT AHEAD, at 2000 AMSL
turn RIGHT to NDB RP, climbing to 3500 AMSL.
At NDB RP turn LEFT to track 343°
(QDR 343° RP), at 12 DME RP turn RIGHT
to join the hold or initiate another approach.
MAX IAS 185 kt. No turn before MAPt.

THR RWY 19 ELEV 686 - 25 hPa
NM to/from THR RWY 19

OCA (OCH)	ASC	A	B	C	D
Straight-in Approach	2,5% ft		1730 (1041)		
	4,0% ft		1570 (881)		
Circling (* see Note)	ft	1730 (1041)		1810 (1121)	
	m	1800	2800	3600	4600



DME RP	NM	5,0	4,0	3,0	2,0	1,0
ALTITUDES	ft	2275	1957	1638	1320	1001

Ground speed	kt	70	90	100	120	140	160
FAF - MAPt (5,0 NM)	min:sec	4:17	3:20	3:00	2:30	2:09	1:53
Rate of descent (5,2%)	ft/min	372	478	531	637	743	849

Timing not authorized for defining the MAPt.

CHANGES: LZR131A and LZR131B withdrawn; new LZR31A, LZR31B, LZR31C, LZR31D, LZR31E established

15. ILS APPROACH RWY 19 or LOC RWY 19 – CAT A/B/C/D

MIL AIP SLOVENSKÁ REPUBLIKA
MIL AIP SLOVAK REPUBLIC

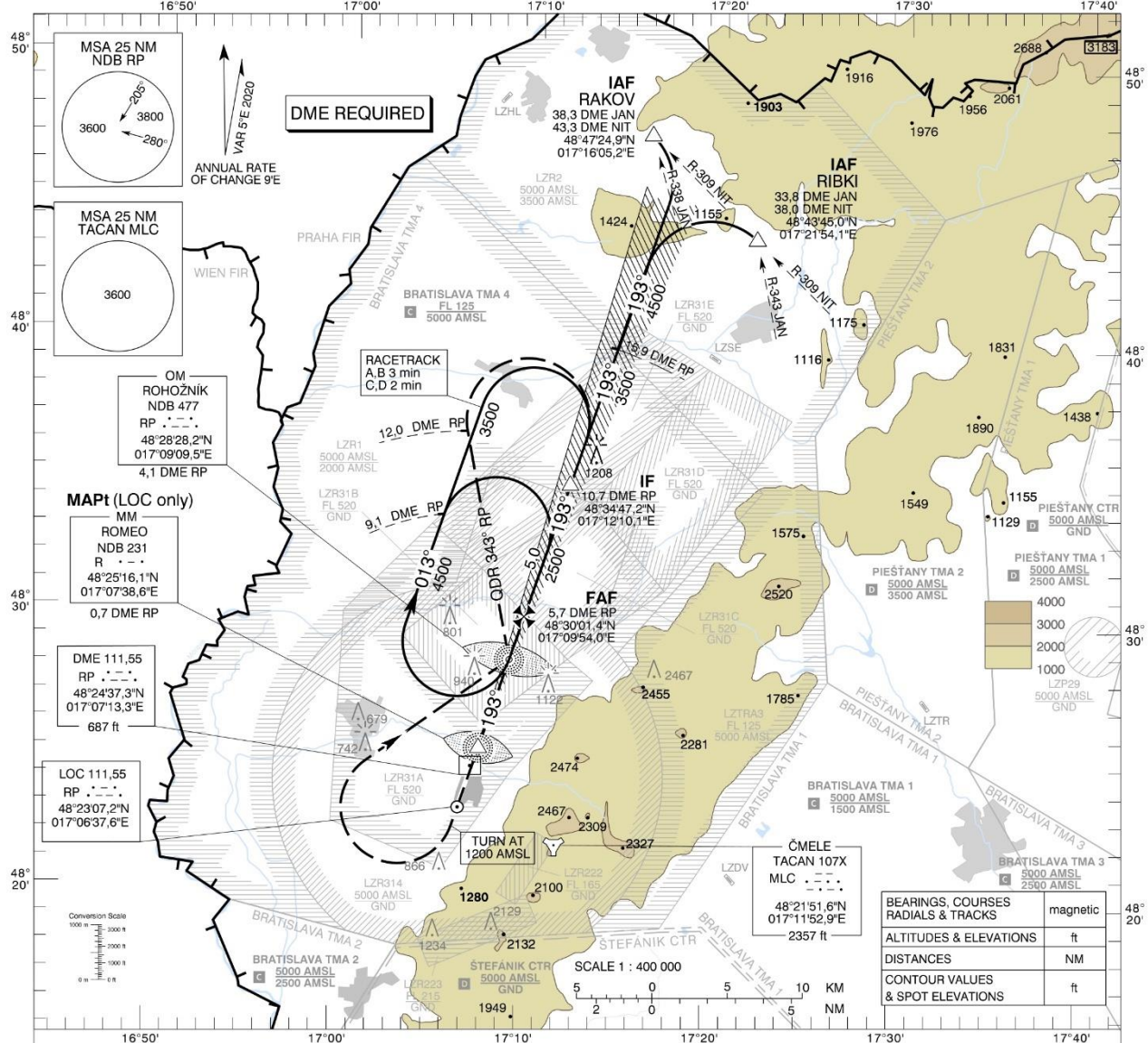
AD 2-LZMC-7-3
11 JUL 24

INSTRUMENT
APPROACH
CHART - ICAO

TRANSITION ALTITUDE
10 000 ft
AD ELEV 689 - 25 hPa
THR RWY 19 ELEV 686,4 - 25 hPa

MALACKY RADAR 120,750 (259,625)
MALACKY TOWER 129,575 (120,750)

MALACKY (LZMC)
ILS CAT I or LOC Z RWY 19
ACFT CAT A/B/C/D



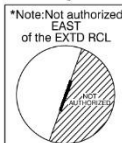
MISSED APPROACH

Climb STRAIGHT AHEAD, at 1200 AMSL
turn RIGHT to NDB RP, climbing to 3500 AMSL.
At NDB RP turn LEFT to track 343°
(QDR 343° RP), at 12,0 DME RP turn RIGHT
to join the hold or initiate another approach.
MAX IAS 185 kt. No turn before MM.

ILS RDH 56,8

THR RWY 19 ELEV 686,4 - 25 hPa
NM to/from THR RWY 19

OCA (OCH)	ASC	A	B	C	D	
Straight-in Approach	CAT I	2,5% ft	943 (257)	955 (269)	963 (277)	974 (288)
	LOC	4,0% ft	918 (232)	930 (244)	938 (252)	949 (263)
Circling (* see Note)		ft	1120 (431)	1190 (501)	1650 (961)	1810 (1121)
VIS		m	1800	2800	3600	4600



DME RP	NM	5,0	4,0	3,0	2,0	1,0
ALTITUDES	ft	2280	1961	1643	1324	1005

Ground speed	kt	70	90	100	120	140	160	180
FAF - MAPt (5,0 NM)	min:sec	4:17	3:20	3:00	2:30	2:09	1:53	1:40
Rate of descent (5,2%)	ft/min	372	478	531	637	743	849	955

Timing not authorized for defining the MAPt.

CHANGES, chart name, flight procedures

16. ILS APPROACH RWY 19 or LOC Y RWY 19 – CAT E

MIL AIP SLOVENSKÁ REPUBLIKA
MIL AIP SLOVAK REPUBLIC

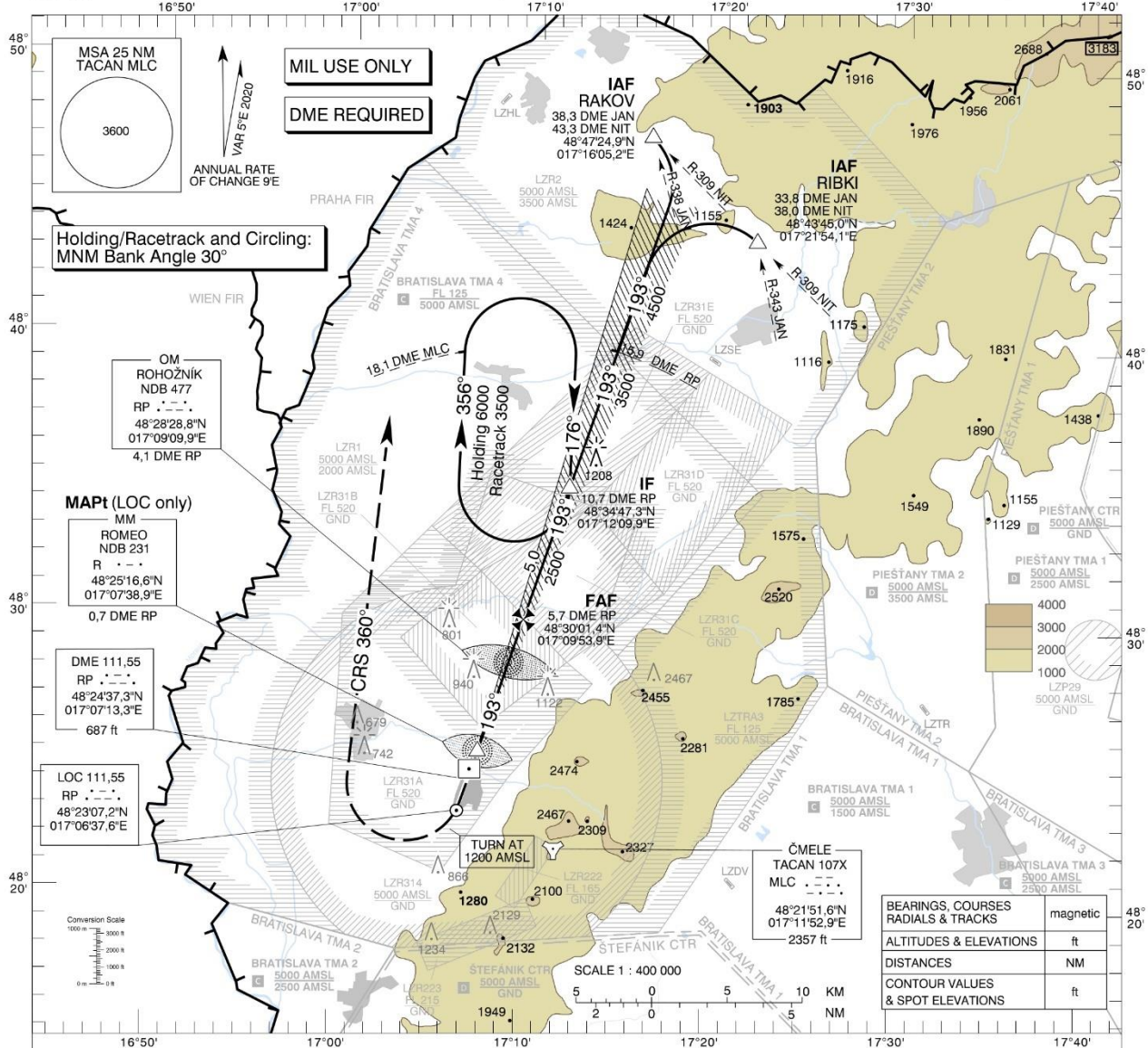
AD 2-LZMC-7-5
11 JUL 24

**INSTRUMENT
APPROACH
CHART**

TRANSITION ALTITUDE
10 000 ft
AD ELEV 689 - 25 hPa
THR RWY 19 ELEV 686.4 - 25 hPa

MALACKY RADAR 120,750 (259,625)
MALACKY TOWER 129,575 (120,750)

**MALACKY (LZMC)
ILS CAT I or LOC Y RWY 19
HPMA/ACFT CAT E**

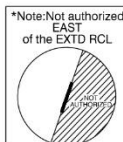


MISSED APPROACH
Climb STRAIGHT AHEAD, at 1200 AMSL
turn RIGHT to CRS 360°, climbing to 4000 AMSL,
then as directed by RADAR CONTROLLER.
Max IAS 275 kt until established on CRS 360°.
MNM Bank Angle 30°.
No turn before MM.

ILS RDH 56,8

THR RWY 19 ELEV 686.4 - 25 hPa
NM to/from THR RWY 19

OCA (OCH)	ASC	E	
		ft	m
Straight-in Approach	CAT I	2.5%	927 (241)
	LOC	4.0%	919 (233)
Circling (* see Note)			1110 (421)
VIS			1880 (1191)
			6500



DME RP	NM	5.0	4.0	3.0	2.0	1.0
ALTITUDES	ft	2280	1961	1643	1324	1005

Ground speed	kt	70	90	100	120	140	160	180
FAF - MAPt (5.0 NM)	min:sec	4:17	3:20	3:00	2:30	2:09	1:53	1:40
Rate of descent (5,2%)	ft/min	372	478	531	637	743	849	955

Timing not authorized for defining the MAPt.

CHANGES: new chart

17. PAR (Precision Approach Radar) RWY 19

MIL AIP SLOVENSKÁ REPUBLIKA
MIL AIP SLOVAK REPUBLIC

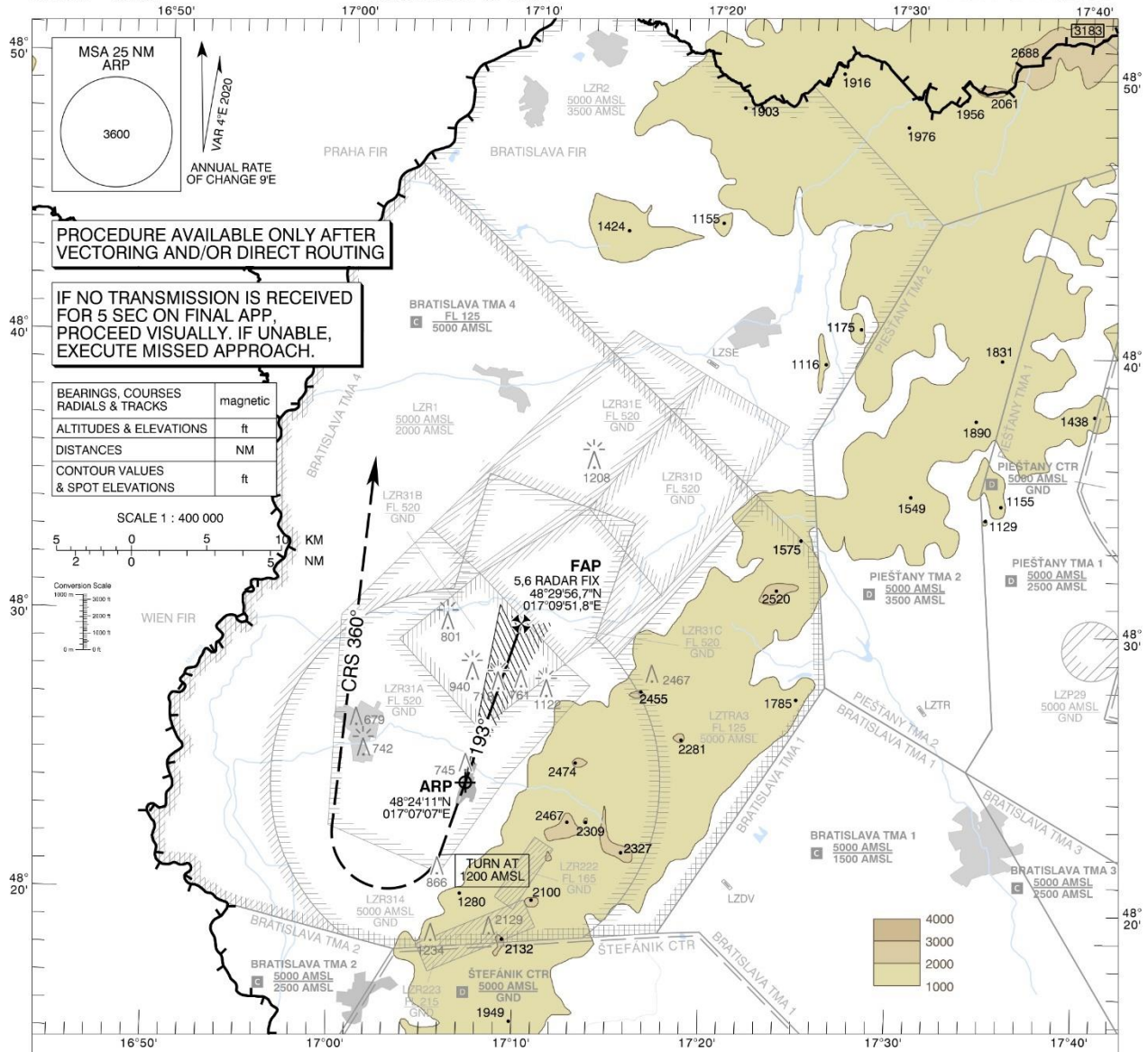
AD 2-LZMC-7-7
11 JUL 24

**INSTRUMENT
APPROACH
CHART - ICAO**

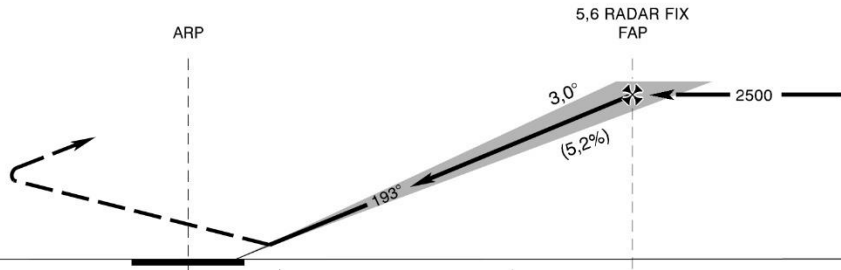
TRANSITION ALTITUDE
10 000 ft
AD ELEV 689 - 25 hPa
THR RWY 19 ELEV 686 - 25 hPa

MALACKY PRECISION 127,150
MALACKY RADAR 120,750 (259,625)
MALACKY TOWER 129,575 (120,750)

**MALACKY (LZMC)
PAR RWY 19
ACFT CAT A/B/C/D**

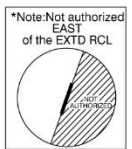


MISSED APPROACH
Climb STRAIGHT AHEAD, at 1200 AMSL, turn RIGHT to CRS 360°, climbing to 4000 AMSL, then as directed by RADAR CONTROLLER. MAX IAS 185 kt until established on CRS 360°. No turn before ARP.



TCH 56,8
THR RWY 19 ELEV 686 - 25 hPa
NM to/from THR RWY 19

OCA (OCH)	ASC	A	B	C	D
Straight - in Approach	2,5%	ft 951 (265)	963 (277)	971 (285)	982 (296)
Circling (* see Note)		ft 1120 (431)	1190 (501)	1650 (961)	1810 (1121)
VIS		m 1800	2800	3600	4600



RADAR FIX	NM	7,0	6,0	5,0	4,0	3,0	2,0	1,0
ALTITUDES	ft	2958	2628	2300	1974	1649	1326	1005

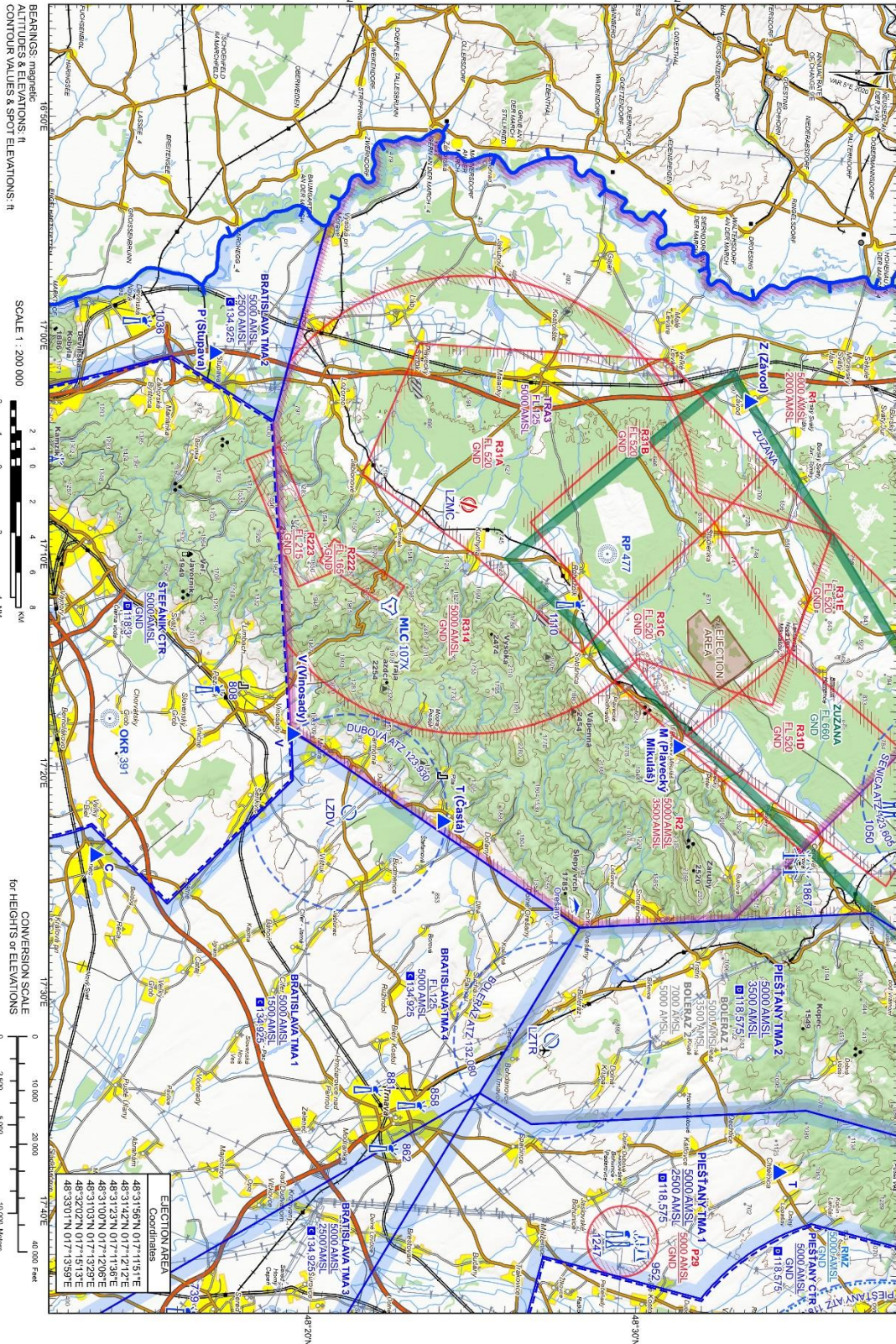
Ground speed	kt	70	90	100	120	140	160	180
Rate of descent (5,2%)	ft/min	372	478	531	637	743	849	955

CHANGES: order of the chart updated

18. VISUAL APPROACH CHART

Changes: R131A and R131B withdrawn; new R31A, R31B, R31C, R31D, R31E established; new RMZ Piešťany and ATZ Piešťany established

VOJENSKÁ LETECKÁ INFORMAČNÁ SLUŽBA
MILITARY AERONAUTICAL INFORMATION SERVICE



ELECTION AREA	
Coordinates	
48°31'58"N	017°14'51"E
48°31'42"N	017°12'21"E
48°31'23"N	017°11'36"E
48°31'00"N	017°12'06"E
48°31'03"N	017°13'29"E
48°32'02"N	017°15'13"E
48°35'07"N	017°13'59"E

MIL AIR SLOVAKIA REPUBLIC
VISUAL APPROACH CHART - ICAO

APP 48-24-11°N 017-07'07"E
AD ELEV 689 ft

MALACKÝ RADAR
MALACKÝ TOWER

120.750 (120.525)
129.575 (120.750)

MALACKÝ (LZMC)
AD 2 LZMC-8-1
13 JUN 24

19. FORMATION BREAKAWAY

MIL AIP SLOVENSKÁ REPUBLIKA
MIL AIP SLOVAK REPUBLIC

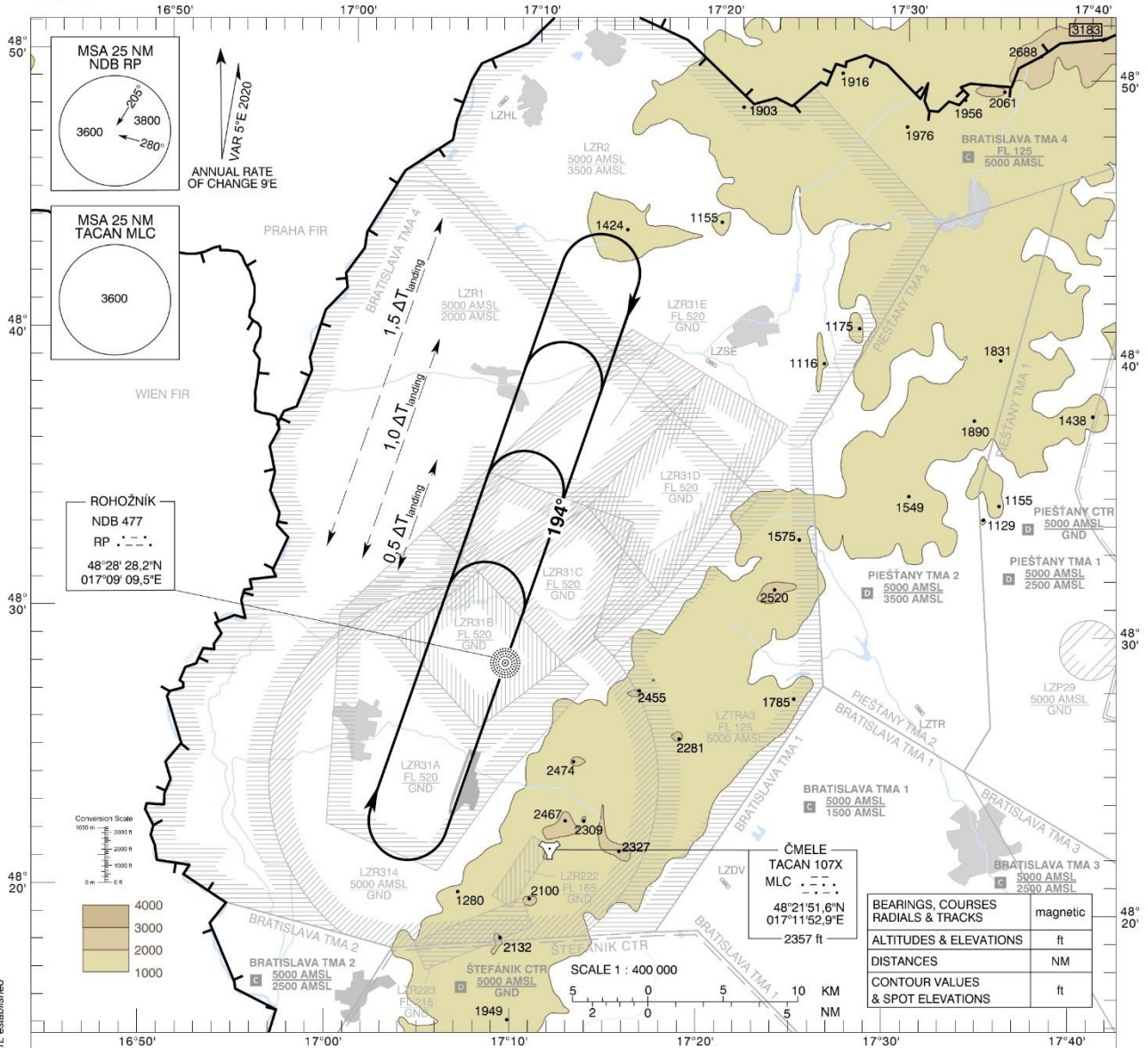
AD 2-LZMC-7-7
13 JUN 24

OAT SPECIAL
PROCEDURES
CHART

TRANSITION ALTITUDE
10 000 ft
AD ELEV 689 - 25 hPa

MALACKY RADAR 120,750 (259,625)
MALACKY TOWER 129,575 (120,750)

MALACKY (LZMC)
FORMATION
BREAKAWAY



CHANGES: LZR131A and LZR131B withdrawn; new LZR31A, LZR31B, LZR31C, LZR31D, LZR31E established

PROFILE VIEW N/A

20. FORMATION JOIN – UP

MIL AIP SLOVENSKÁ REPUBLIKA
MIL AIP SLOVAK REPUBLIC

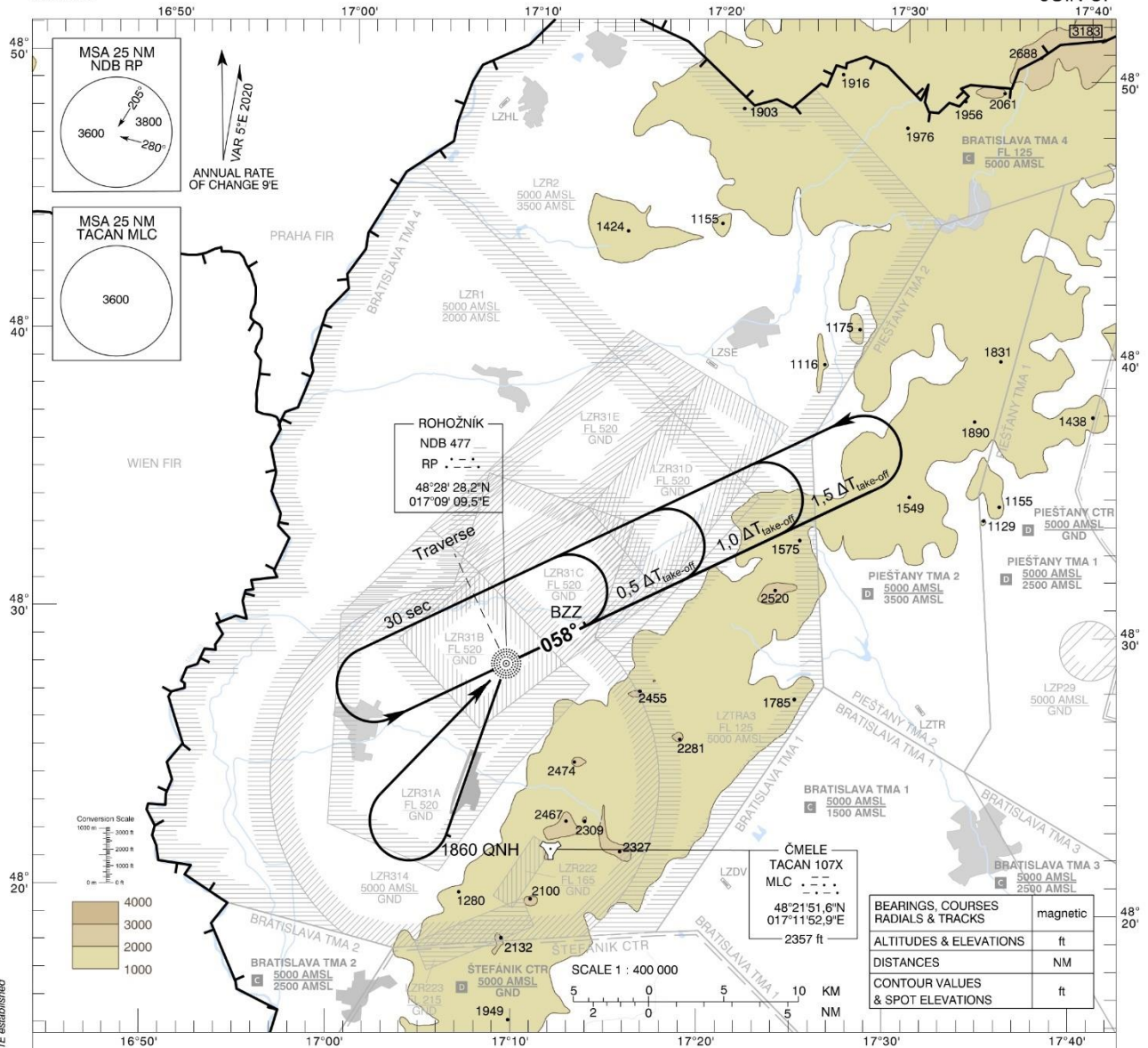
AD 2-LZMC-7-9
13 JUN 24

OAT SPECIAL PROCEDURES CHART

TRANSITION ALTITUDE
10 000 ft
AD ELEV 689 - 25 hPa

MALACKY RADAR 120,750 (259,625)
MALACKY TOWER 129,575 (120,750)

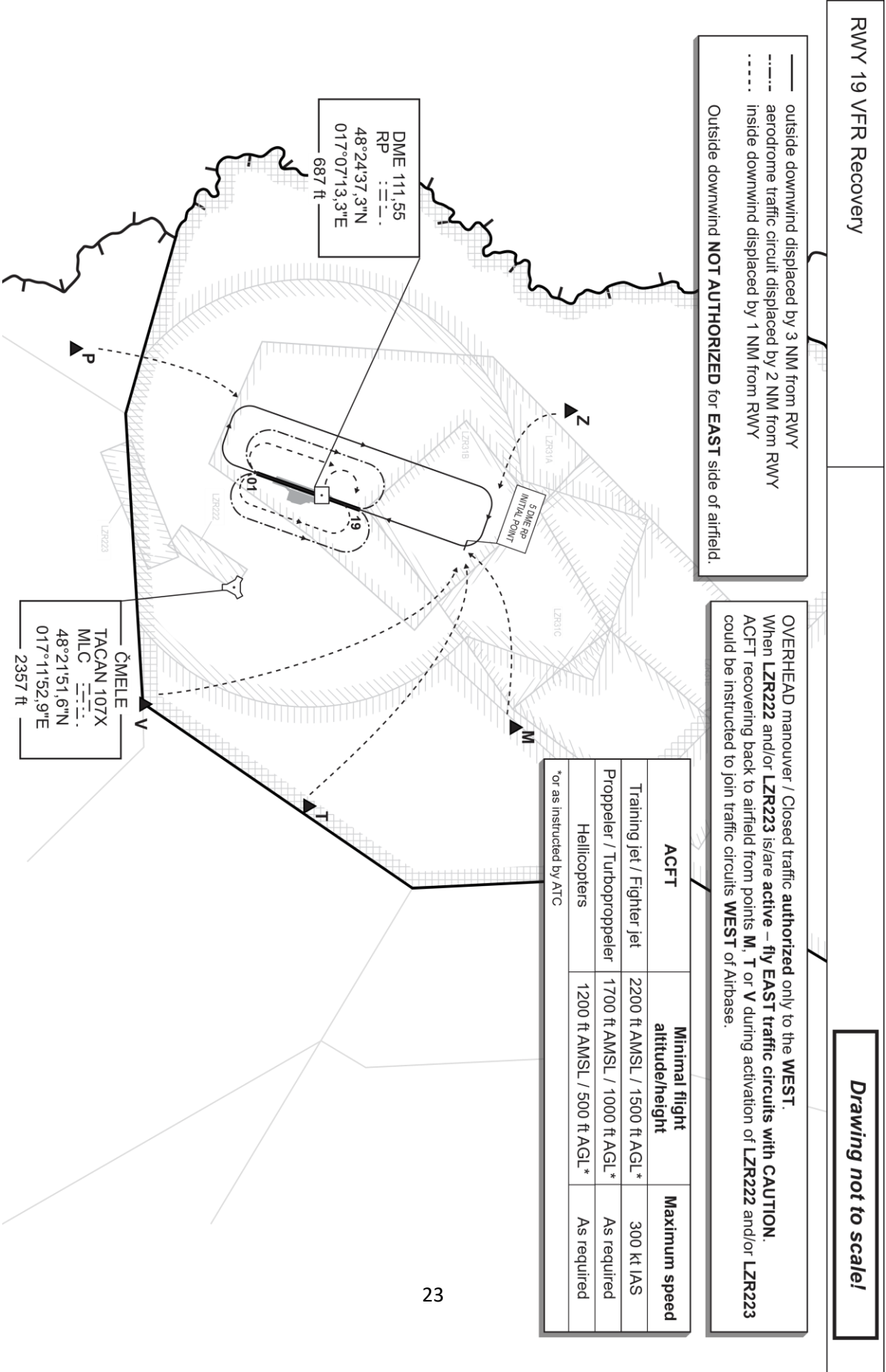
MALACKY (LZMC) FORMATION JOIN-UP



PROFILE VIEW N/A

CHANGES: LZR131A and LZR131B withdrawn; new LZR31A, LZR31B, LZR31C, LZR31D, LZR31E established

21. RWY 19 VFR RECOVERY



RWY 19 VFR Recovery

Drawing not to scale!

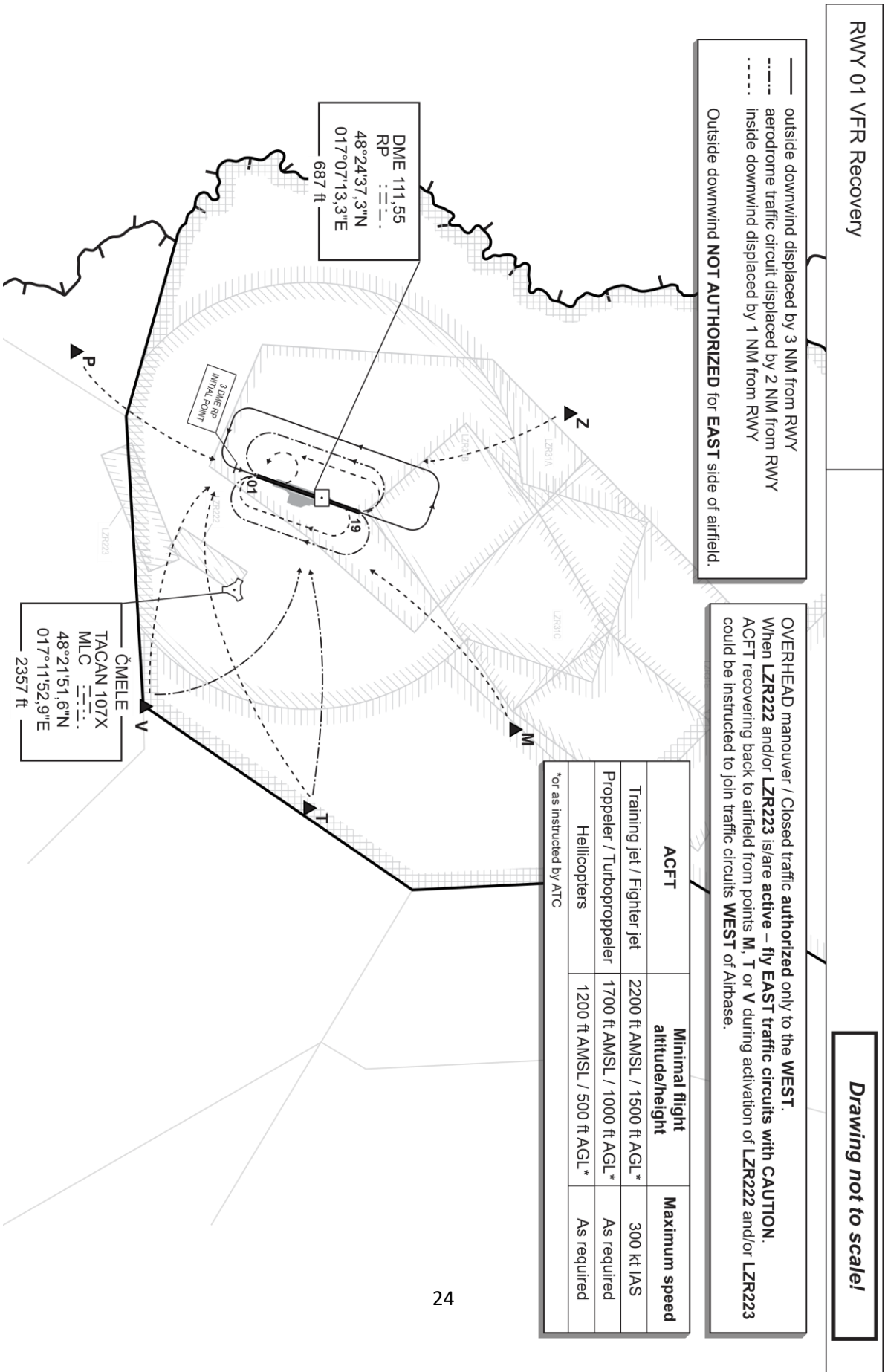
— outside downwind displaced by 3 NM from RWY
 - - - - aerodrome traffic circuit displaced by 2 NM from RWY
 · · · · · inside downwind displaced by 1 NM from RWY
 Outside downwind **NOT AUTHORIZED** for EAST side of airfield.

OVERHEAD maneuver / Closed traffic **authorized** only to the WEST.
 When LZRR222 and/or LZRR223 is/are active – fly EAST traffic circuits with CAUTION.
 ACFT recovering back to airfield from points M, T or V during activation of LZRR222 and/or LZRR223 could be instructed to join traffic circuits WEST of Airbase.

ACFT	Minimal flight altitude/height	Maximum speed
Training jet / Fighter jet	2200 ft AMSL / 1500 ft AGL*	300 Kt IAS
Propeller / Turbopropeller	1700 ft AMSL / 1000 ft AGL*	As required
Helicopters	1200 ft AMSL / 500 ft AGL*	As required

*or as instructed by ATC

22. RWY 01 VFR RECOVERY



RWY 01 VFR Recovery

— outside downwind displaced by 3 NM from RWY
 - - - aerodrome traffic circuit displaced by 2 NM from RWY
 inside downwind displaced by 1 NM from RWY
 Outside downwind **NOT AUTHORIZED** for **EAST** side of airfield.

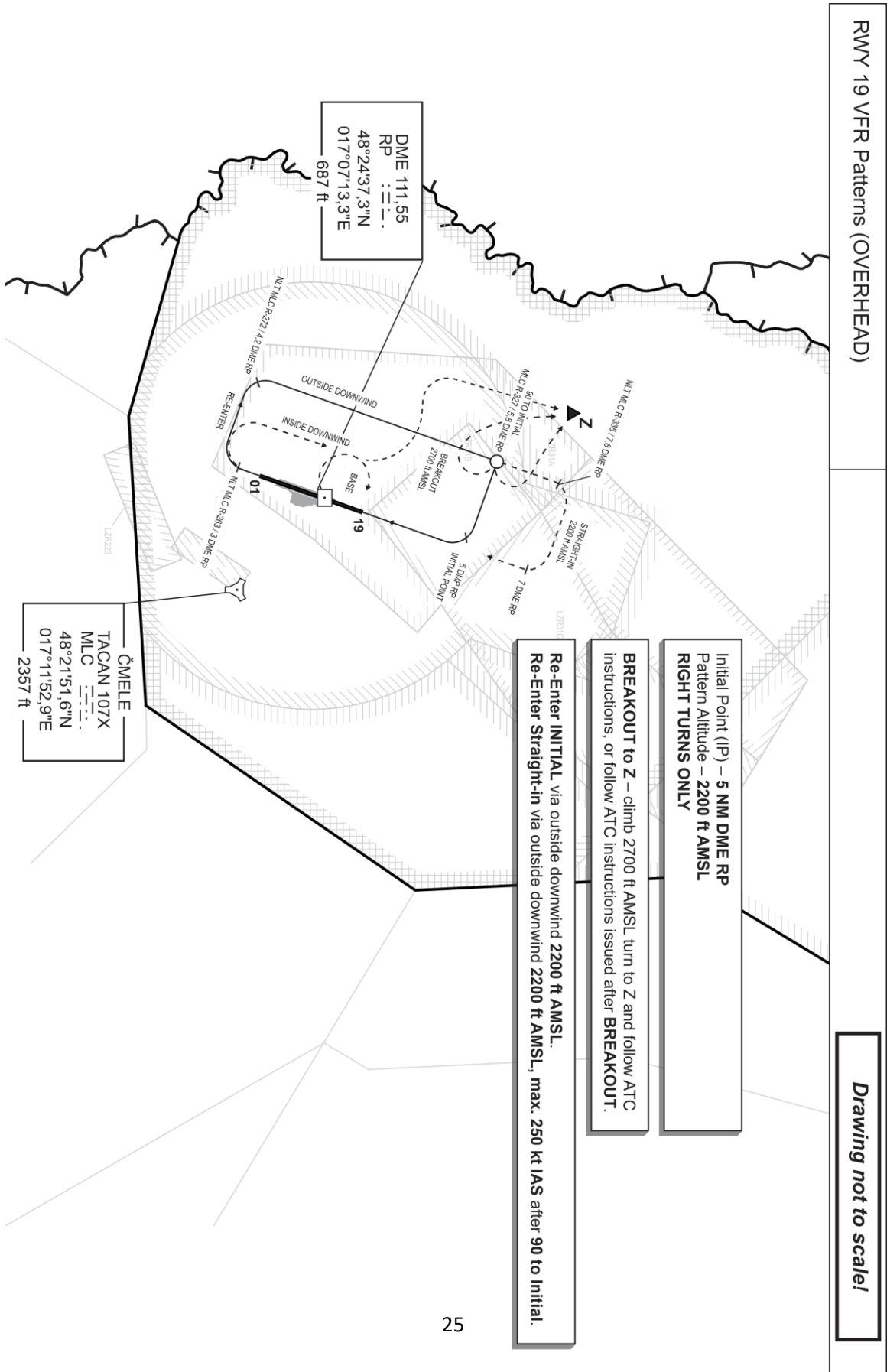
OVERHEAD maneuver / Closed traffic **authorized** only to the **WEST**.
 When LZR222 and/or LZR223 is/are **active** – **fly EAST** traffic circuits with **CAUTION**.
 ACFT recovering back to airfield from points **M**, **T** or **V** during activation of LZR222 and/or LZR223
 could be instructed to join traffic circuits **WEST** of Airbase.

ACFT	Minimal flight altitude/height	Maximum speed
Training jet / Fighter jet	2200 ft AMSL / 1500 ft AGL *	300 kt IAS
Propeller / Turbopropeller	1700 ft AMSL / 1000 ft AGL *	As required
Helicopters	1200 ft AMSL / 500 ft AGL *	As required

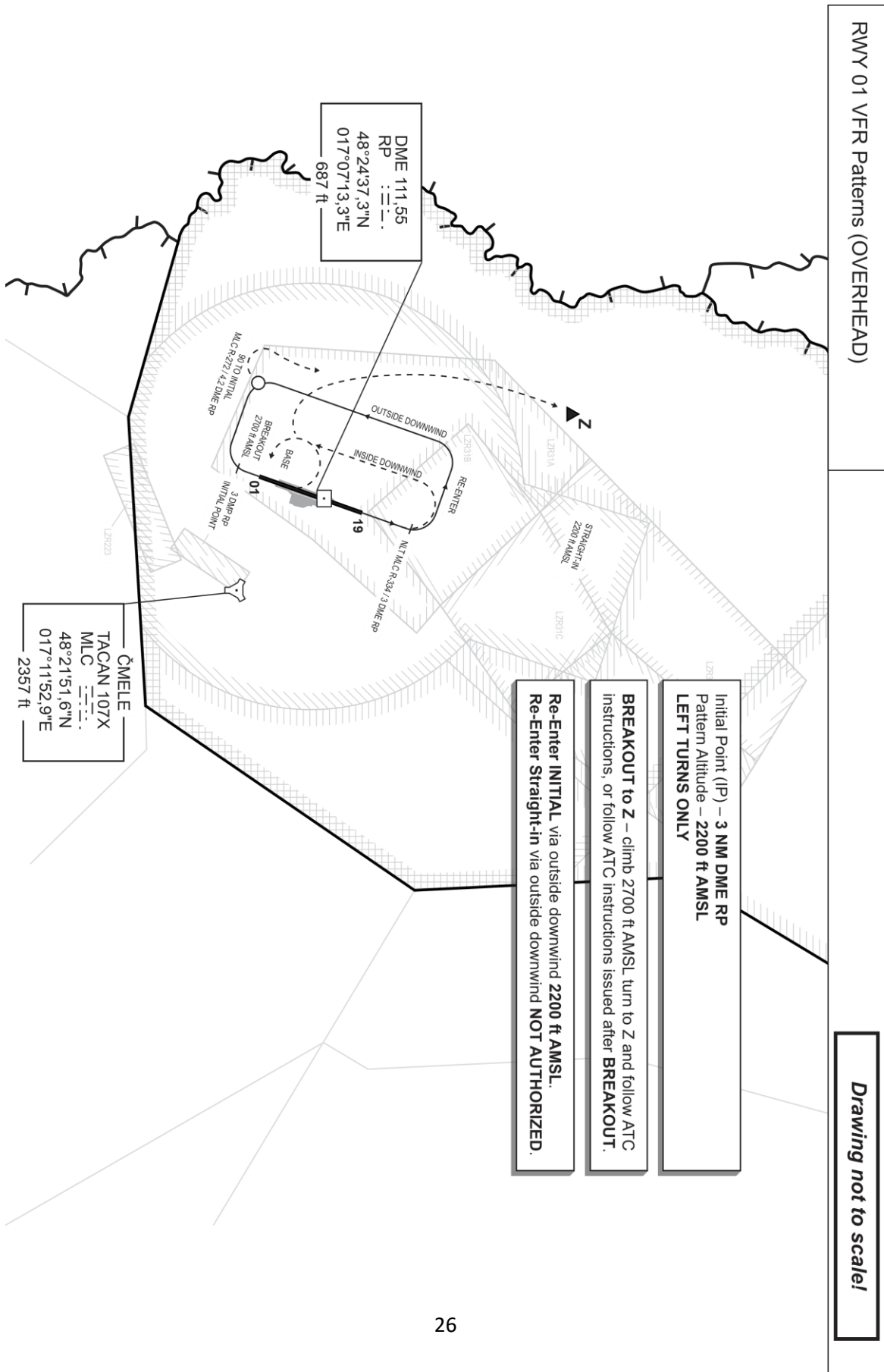
*or as instructed by ATC

Drawing not to scale!

23. RWY 19 VFR PATTERNS (OVERHEAD)



24. RWY 01 VFR PATTERNS (OVERHEAD)



RWY 01 VFR Patterns (OVERHEAD)

Drawing not to scale!

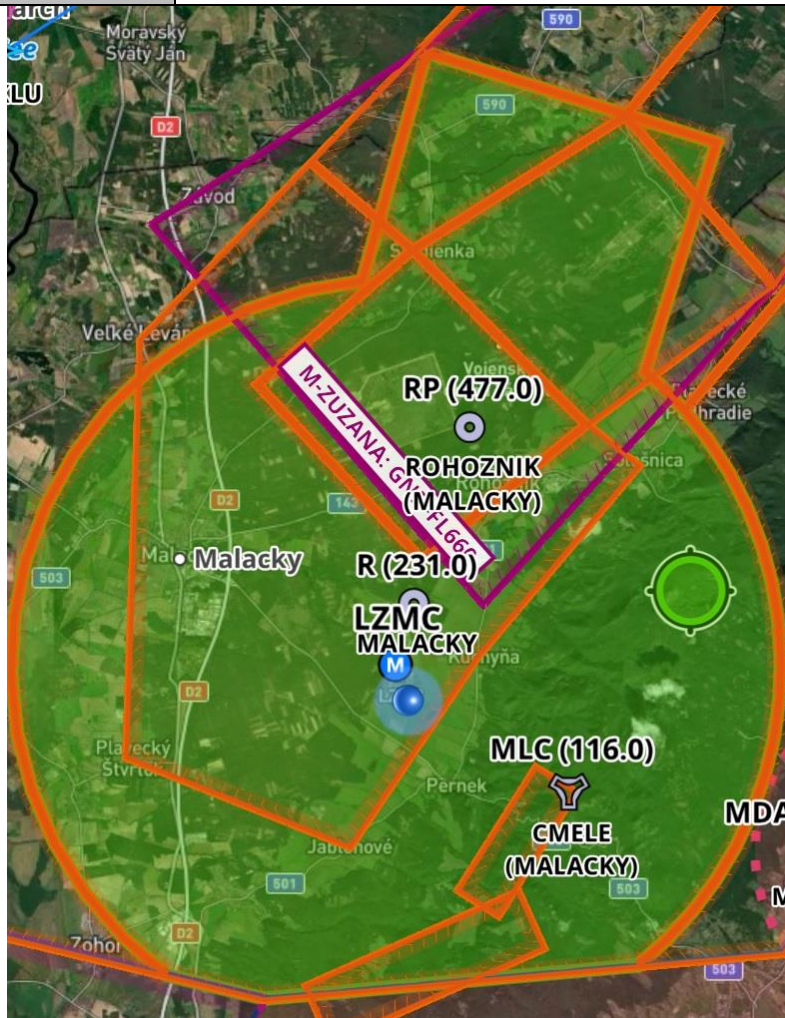
Initial Point (IP) – 3 NM DME RP
 Pattern Altitude – 2200 ft AMSL
LEFT TURNS ONLY

BREAKOUT to Z – climb 2700 ft AMSL, turn to Z and follow ATC instructions, or follow ATC instructions issued after **BREAKOUT**.

Re-Enter INITIAL via outside downwind **2200 ft AMSL**.
Re-Enter Straight-in via outside downwind **NOT AUTHORIZED**.

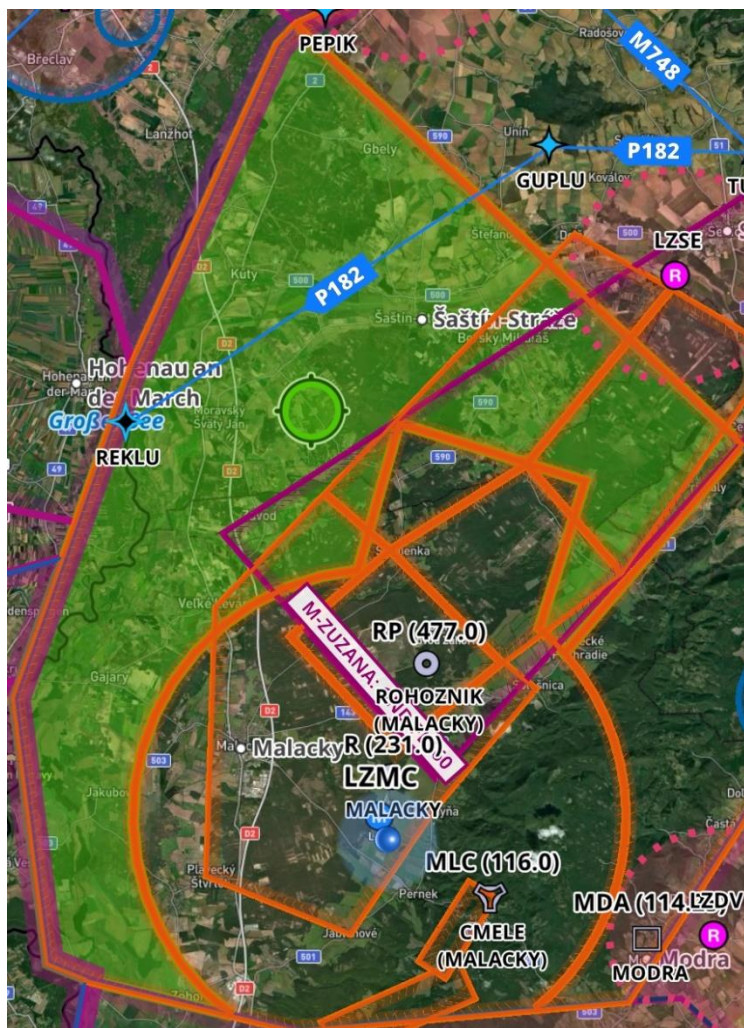
25. LZR314 MCTR Malacky

1	Name and lateral limits	Malacky MCTR 48°35'18''N 017°07'55''E - 48°33'40''N 017°15'52''E - 48°29'31''N 017°13'55''E - circular arc 7 NM around ARP LZMC to 48°28'49''N 017°15'00''E - circular arc 7 NM around ARP LZMC to 48°18'45''N 017°13'43''E - 48°18'08''N 017°03'33''E - 48°18'33''N 017°00'53''E - circular arc 7 NM around ARP LZMC to 48°31'09''N 017°06'10''E - 48°35'18''N 017°07'55''E
2	Vertical limits	GND – 5000 ft (1500m)
3	Airspace classification	D
4	ATS unit call sign / language(s)	MALACKY TOWER / EN, SL
5	Transition altitude	10 000ft

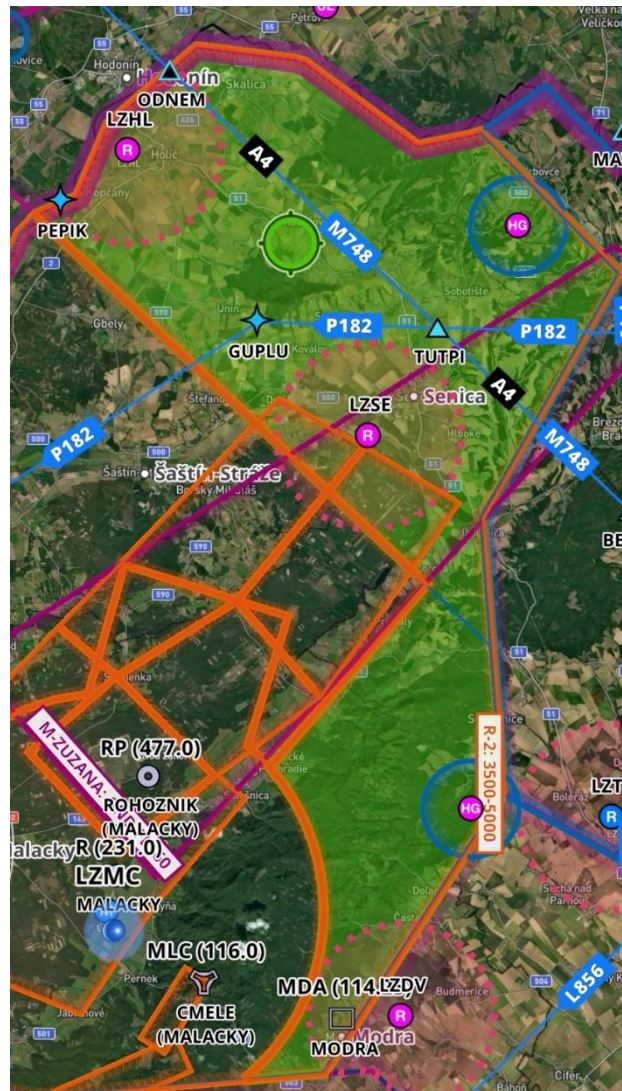


26. LZR1, 2, LZTRA3 MTMA

1	Name and lateral limits	LZR1 MTMA MALACKY 48°46'22''N 017°03'44''E - 48°34'42''N 017°22'35''E - 48°28'49''N 017°15'00''E - circular arc 7 NM around ARP LZMC to 48°29'31''N 017°13'55''E - 48°33'40''N 017°15'52''E - 48°35'18''N 017°07'55''E - 48°31'09''N 017°06'10''E - circular arc 7 NM around ARP LZMC to 48°18'33''N 017°00'53''E - 48°19'33''N 016°54'32''E - along state border 48°46'22''N 017°03'44''E
2	Vertical limits	2000 ft (600m) – 5000 ft (1500m)
3	Airspace classification	D
4	ATS unit call sign / language(s)	MALACKY RADAR / EN, SL
5	Transition altitude	10 000ft



1	Name and lateral limits	LZR2 MTMA MALACKY 48°49'32''N 017°24'52''E - 48°44'42''N 017°32'03''E - 48°36'49''N 017°25'19''E - 48°32'41''N 017°25'48''E - 48°27'59''N 017°26'22''E - 48°18'59''N 017°17'41''E - 48°16'45''N 017°13'43''E - - circular arc 7 NM around ARP LZMC to 48°28'49''N 017°15'00''E - 48°34'42''N 017°22'35''E - 48°46'22''N 017°03'44''E - along state border 48°49'32''N 017°24'52''E
2	Vertical limits	3500 ft (1050m) – 5000 ft (1500m)
3	Airspace classification	D
4	ATS unit call sign / language(s)	MALACKY RADAR / EN, SL
5	Transition altitude	10 000ft



1	Name and lateral limits	LZTRA3 MTMA MALACKY 48°46'22''N 017°03'44''E - 48°34'42''N 017°22'35''E - 48°32'41''N 017°25'48''E - 48°27'59''N 017°26'22''E - 48°18'59''N 017°17'41''E - 48°16'45''N 017°13'43''E - 48°18'08''N 017°03'33''E - 48°18'33''N 017°00'53''E - 48°19'33''N 016°54'32''E - along state border 48°46'22''N 017°03'44''E
2	Vertical limits	5000 ft (1500m) – FL125 (3800m)
3	Airspace classification	D
4	ATS unit call sign / language(s)	MALACKY RADAR / EN, SL
5	Transition altitude	10 000ft



27. EMERGENCY

GENERAL:

DECLARATION – notify the controller of :

1. Call sign
2. Position
3. Nature of Emergency
4. Number of persons on board
5. Fuel on board
6. Landing intention (pattern, RWY...)
7. Set SQUAWK 7700

COMMLOSS:

COMMLOSS (inside LZR 1,2, LZTRA 3 MTMA Malacky):

IFR

- SQUAWK 7600,
- proceed to NDB RP at the last assigned level (or min. flight altitude), - enter holding pattern (min. one turn in the holding), - follow instrument approach procedure.

VFR

- SQUAWK 7600,
- proceed to W circuit RWY19/01 (ALT 1700 ft), - watch out the traffic.

COMMLOSS (FIR LZBB):

- in the event of air-ground communications failure – follow AIP SR ENR 1.1.11

Visual meteorological conditions (VMC) ([ENR 1.1.11.1.3](#))

An aircraft with communication failure in visual meteorological conditions shall:

- a) set transponder to code 7600
- b) continue to fly in VMC
- c) land at the nearest suitable aerodrome
- d) report its arrival time by the most expeditious means to the appropriate ATC unit or
- e) if considered advisable, complete an IFR flight in accordance with para. [ENR 1.1.11.1.4](#)

Instrument meteorological conditions (IMC) ([ENR 1.1.11.1.4](#))

An aircraft with communication failure in instrument meteorological conditions, or when conditions are such that it does not appear likely that the pilot will complete the flight in accordance with para. [ENR 1.1.11.1.3](#), shall:

- a) set transponder to code 7600
- b) maintain the last assigned speed and level, or minimum flight altitude if higher, for a period of 7 minutes following:
 1. the time the last assigned level or minimum flight altitude is reached; or

2. the time the transponder is set to code 7600 or the ADS-B transmitter is set to indicate the loss of air-ground communications; or
3. the aircraft's failure to report its position over a compulsory reporting point;

whichever is later and thereafter adjust level and speed in accordance with the filed flight plan,

- c) when being vectored or having been directed by ATC to proceed offset using RNAV without a specified limit, proceed in the most direct manner possible to rejoin the current flight plan route no later than the next significant point, taking into consideration the applicable minimum flight altitude;
- d) proceed according to the current flight plan route to the appropriate designated navigation aid or fix serving the destination aerodrome and, when required to ensure compliance with para. [ENR 1.1.11.1.4.1](#) e), hold over this aid or fix until commencement of descent;
- e) commence descent from the navigation aid or fix specified in para. [ENR 1.1.11.1.4.1](#) d) at, or as close as possible to, the expected approach time last received and acknowledged; or, if no expected approach time has been received and acknowledged, at, or as close as possible to, the estimated time of arrival resulting from the current flight plan;
- f) complete a normal instrument approach procedure as specified for the designated navigation aid or fix; and
- g) land, if possible, within 30 minutes after the estimated time of arrival specified in para. [ENR 1.1.11.1.4.1](#) e) or the last acknowledged expected approach time, whichever is later.

Note: As evidenced by the meteorological conditions prescribed therein, para. [ENR 1.1.11.1.3](#) relates to all controlled flights, whereas para. [ENR 1.1.11.1.4](#) relates only to IFR flights.

COMMLOSS DURING PAR APPROACH

In the case of communication failure when using the PAR approach, the time data of 7 minutes for maintaining the last assigned speed and level or minimum flight altitude according to paragraph ENR 1.1.11.4.1 AIP SR does not apply to OAT operations flying in IMC, approaching the state border of the Slovak Republic . Provided that the state border of the Slovak Republic would be crossed during the specified period of 7 minutes, the operation can continue the flight along the route in accordance with the valid flight plan for the relevant one the navigation aid or fix of the destination airport before the specified time has elapsed.

COMMLOSS DURING ILS RWY 19 or LOC RWY19 – CAT E

In the case of the communication failure of the F-16 aircraft/ aircrafts performing an approach using the ILS RWY 19 or LOC Y RWY 19 for CAT E, it is expected that the transponder will be set to code 7600 and proceed to holding pattern above IF, after established in holding pattern, perform another ILS approach for RWY 19 (possibly with circle to land for RWY 01 depending on wind).

In the event of a loss of communication, green or red flares shall be fired by the TWR Malacky or the ornithologist (on the grass strip). Red flare means - no landing / repeat, green flare means – cleared to land. The runway in use is indicated during the day by the illumination of the PAPI and the threshold lights of the runway and at night by the runway lights and the approach row.

