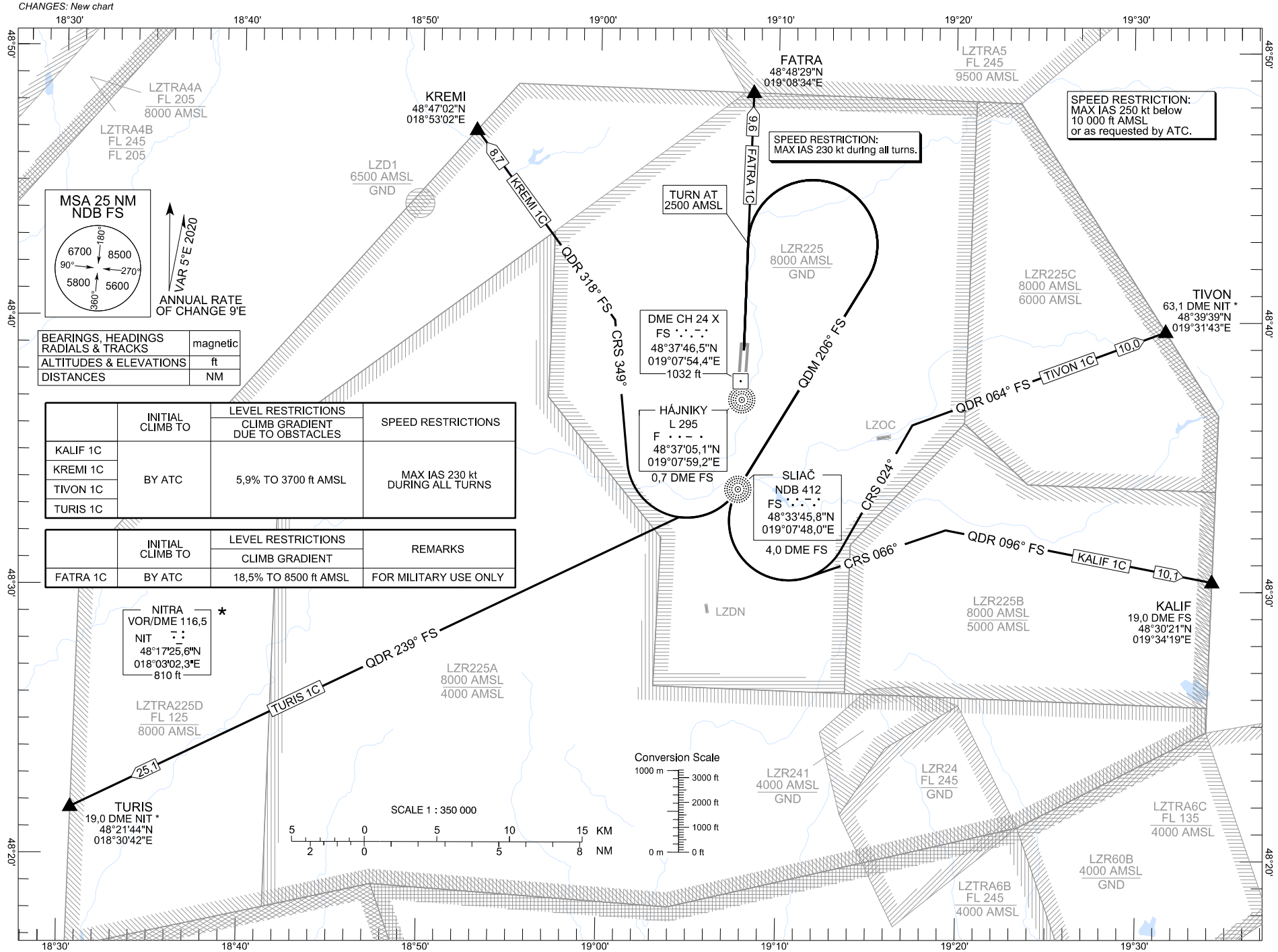


STANDARD DEPARTURE CHART -
INSTRUMENT (SID) - ICAO

TRANSITION ALTITUDE
10 000 ft

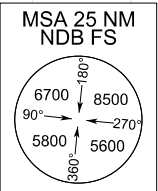
SLIAČ APPROACH/RADAR
SLIAČ TOWER
119.155
122.905

ACFT CAT A/B/C/D



SPEED RESTRICTION:
MAX IAS 250 kt below
10 000 ft AMSL
or as requested by ATC.

SPEED RESTRICTION:
MAX IAS 230 kt during all turns.



BEARINGS, HEADINGS RADIALS & TRACKS	magnetic
ALTITUDES & ELEVATIONS	ft
DISTANCES	NM

	INITIAL CLIMB TO	LEVEL RESTRICTIONS CLIMB GRADIENT DUE TO OBSTACLES	SPEED RESTRICTIONS
KALIF 1C	BY ATC	5,9% TO 3700 ft AMSL	MAX IAS 230 kt DURING ALL TURNS
KREMI 1C			
TIVON 1C			
TURIS 1C			

	INITIAL CLIMB TO	LEVEL RESTRICTIONS CLIMB GRADIENT	REMARKS
FATRA 1C	BY ATC	18,5% TO 8500 ft AMSL	FOR MILITARY USE ONLY

NITRA
VOR/DME 116,5 *
NIT
48°17'25,6"N
018°03'02,3"E
810 ft

