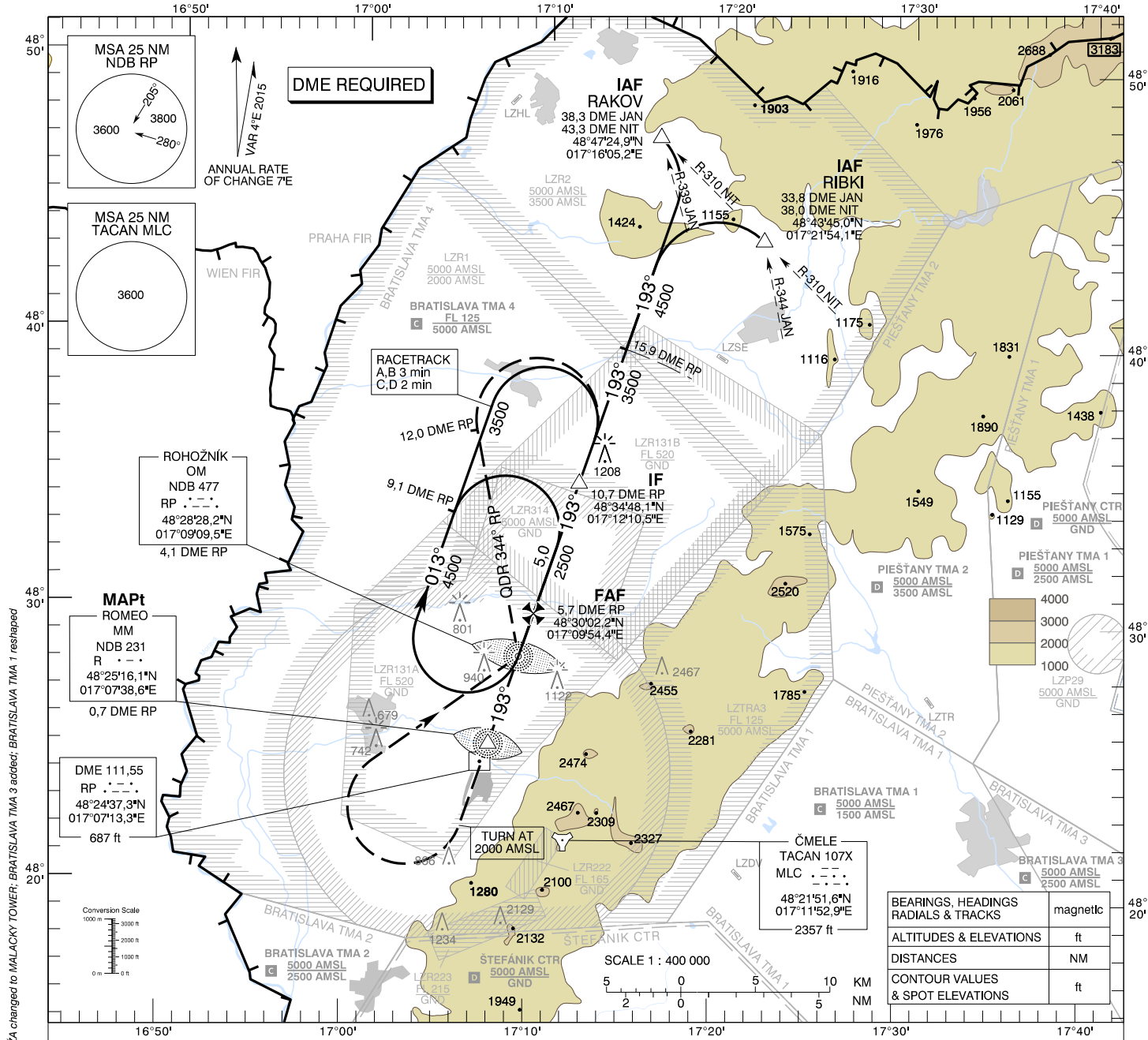


**INSTRUMENT  
APPROACH  
CHART - ICAO**

**TRANSITION ALTITUDE**  
10 000 ft  
AD ELEV 689 - 25 hPa  
THR RWY 19 ELEV 686 - 25 hPa

**MALACKY RADAR 120,750 (259,625)**  
**MALACKY TOWER 129,575 (120,750)**

**MALACKY (LZMC)**  
**NDB RWY 19**  
**ACFT CAT A/B/C/D**



**MISSED APPROACH**

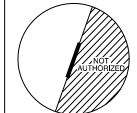
Climb STRAIGHT AHEAD, at 2000 AMSL  
turn RIGHT to NDB RP, climbing to 3500 AMSL.  
At NDB RP turn LEFT to track 344°  
(QDR 344° RP), at 12 DME RP turn RIGHT  
to join the hold or initiate another approach.  
MAX IAS 185 kt. No turn before MAPt.

THR RWY 19 ELEV 686 - 25 hPa

NM to/from THR RWY 19

OCA (OCH)	ASC	A	B	C	D
Straight-In Approach	2,5%	1730 (1041)			
	4,0%	1570 (881)			
Circling (* see Note)	ft	1730 (1041)		1810 (1121)	
	m	1800	2800	3600	4600

\*Note: Not authorized EAST of the EXTD RCL



DME RP	NM	5,0	4,0	3,0	2,0	1,0
ALTITUDES	ft	2275	1957	1638	1320	1001

Ground speed	kt	70	90	100	120	140	160
FAF - MAPt (5,0 NM)	min:sec	4:17	3:20	3:00	2:30	2:09	1:53
Rate of descent (5,2%)	ft/min	372	478	531	637	743	849

Timing not authorized for defining the MAPt.

CHANGES: LZR01, LZR02, LZTRA03 renamed to LZR1, LZR2, LZTRA3; call sign MALACKY VEŽA changed to MALACKY TOWER; BRATISLAVA TMA 3 added; BRATISLAVA TMA 1 reshaped